

CHECKERED PLATES AND PLAIN SHEETS

CHECKERED PLATES AND PLAIN SHEETS

APL Apollo checkered plates and plain sheets are steel plates with diamond shapes on the surface. Due to the rough surface and slip resistance, they are used for industrial flooring, factory stair boards, truck & bus body, decorative sheets as wall guard. The plates are easy to form, durable and come with an aesthetic finish. The sturdy and durable checkered plates are manufactured by roll press processing.

Size Ranges:

Thickness – 1.6 to 6.0mm

Width – up to 1250mm

Length – Up to 8 metre

Advantages:



Easy to use



Beautiful
Appearance



Slip Resistance

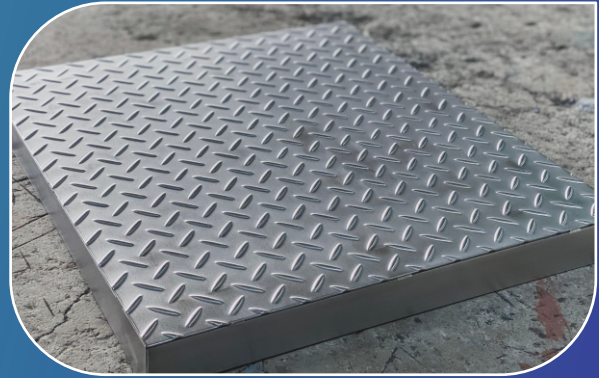


Recyclable

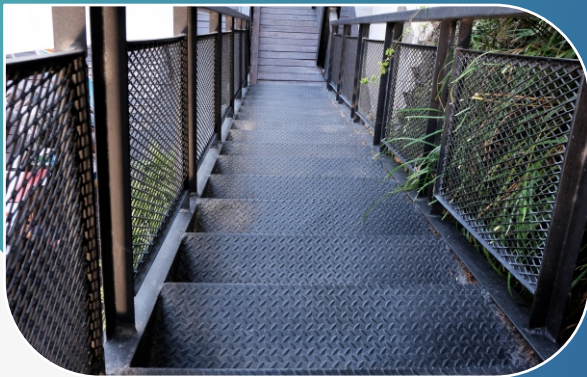
APPLICATIONS



Bus/ Truck Body



Floor covering panels



Stairs



Flyover Walkway



Scan to know more about us



10
Plants



29
Sales Offices



800+
Dealers & Distributors



In 2000
Towns & Cities



1 Lakh+
Retailers & Fabricators



26 Lakh
Tonnes Capacity



30+ Years
of Experience

Corporate Office:

36, Kaushambi, Near Anand Vihar Terminal, Delhi (NCR) 201010, India.

T +91-120 4041400, F +91-120 4041444

STAY CONNECTED. STAY UPDATED.



APL APOLLO / APL APOLLO OFFICIAL | CUSTOMER CARE: 1800-102-3737

info@aplapollo.com | www.aplapollo.com