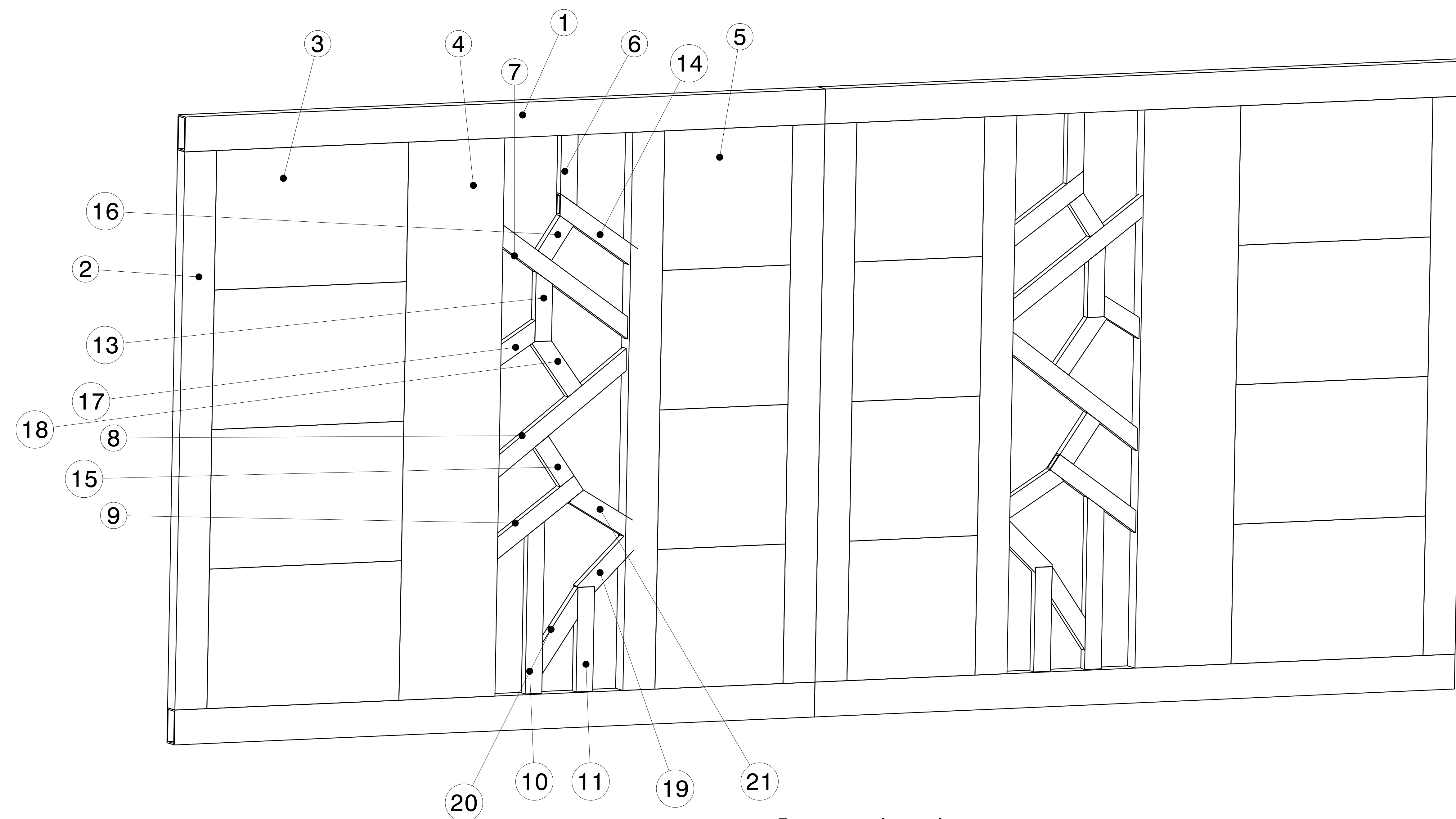


| REV | DATE | DESCRIPTION |
|-----|-----------|------------------|
| 00 | 20MAR2021 | INITIAL REVISION |

- NOTES:
- (⊥) ALL VERTICAL SUPPORTS ARE PERPENDICULAR.
 - FLATNESS OF .5MM IS APPLIED BY DEFAULT.
 - ⊘ WELD BEAD OF 2MM RADIUS IS FOLLOWED.
 - ▽ SURFACE FINISH MEDIUM TO SMOOTH IS USED.
 - ALL TUBES ARE AS PER APL APOLLO STANDARD. CHANGES MAY EFFECT THE LOAD CAPACITY.
 - ALL HORIZONTAL AND VERTICAL TUBES ARE PERPENDICULAR TO EACH OTHER WITH ±1 DEG.
 - FINE WELDING IS REQUIRED AS PER MENTIONED DETAILS AND FINISHING.
 - HIGHER CURRENT WELDING MAY AFFECT THE BRITTLNESS OF MATERIAL WHICH LATER MAY RAISE TO WEAKENING OF STRUCTURE.
 - FABRICATORS ARE ALLOWED TO USE FITTINGS/FRAMES/SUPPORTS AS NEEDED AND THE SAME MUST BE COMMUNICATED BACK TO ENGINEERING TEAM.
 - BOP COMPONENT WEIGHTS ARE FOR REFERENCE ONLY AND SUBJECTED TO CHANGE PER PURCHASED COMPONENTS.



Isometric view
Scale: 3:10

| ITEM NO. | PART NUMBER | DESCRIPTION | QTY. | Wt (Kg)/Each |
|----------|--------------|----------------------|------|--------------|
| 20 | RHS FRAME 17 | 26 X 13 X 2 X 100 | 2 | 0.10 |
| 19 | RHS FRAME 16 | 26 X 13 X 2 X 150 | 2 | 0.15 |
| 18 | RHS FRAME 15 | 26 X 13 X 2 X 100 | 2 | 0.10 |
| 17 | RHS FRAME 14 | 26 X 13 X 2 X 100 | 2 | 0.10 |
| 16 | RHS FRAME 13 | 26 X 13 X 2 X 100 | 2 | 0.10 |
| 15 | RHS FRAME 12 | 26 X 13 X 2 X 100 | 2 | 0.10 |
| 14 | RHS FRAME 11 | 26 X 13 X 2 X 100 | 2 | 0.10 |
| 13 | RHS FRAME 10 | 26 X 13 X 2 X 150 | 2 | 0.15 |
| 12 | RHS FRAME 9 | 26 X 13 X 2 X 100 | 2 | 0.10 |
| 11 | RHS FRAME 8 | 26 X 13 X 2 X 150 | 2 | 0.15 |
| 10 | RHS FRAME 7 | 26 X 13 X 2 X 300 | 2 | 0.25 |
| 9 | RHS FRAME 6 | 26 X 13 X 2 X 200 | 2 | 0.20 |
| 8 | RHS FRAME 5 | 26 X 13 X 2 X 300 | 2 | 0.25 |
| 7 | RHS FRAME 4 | 26 X 13 X 2 X 300 | 2 | 0.25 |
| 6 | RHS FRAME 3 | 26 X 13 X 2 X 150 | 2 | 0.10 |
| 5 | PLANK 3 | 200 X 25 X 1.6 X 200 | 8 | 1.2 |
| 4 | PLANK 2 | 150 X 25 X 1.6 X 800 | 2 | 3.46 |
| 3 | PLANK 1 | 200 X 25 X 1.6 X 300 | 8 | 1.46 |
| 2 | RHS FRAME 2 | 50 X 25 X 2 X 800 | 6 | 1.80 |
| 1 | RHS FRAME 1 | 50 X 25 X 2 X 1000 | 4 | 2.25 |

This drawing is our property. It can't be reproduced or communicated without our written agreement.

APL APOLLO TUBES LTD.

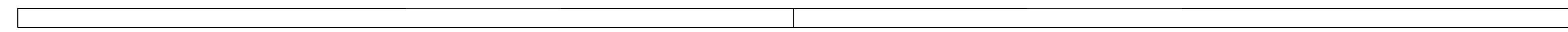
DRAWING TITLE: **GATE**

SCALE: A0
DRAWING NUMBER: P2P MAR 21-09
REV: 00

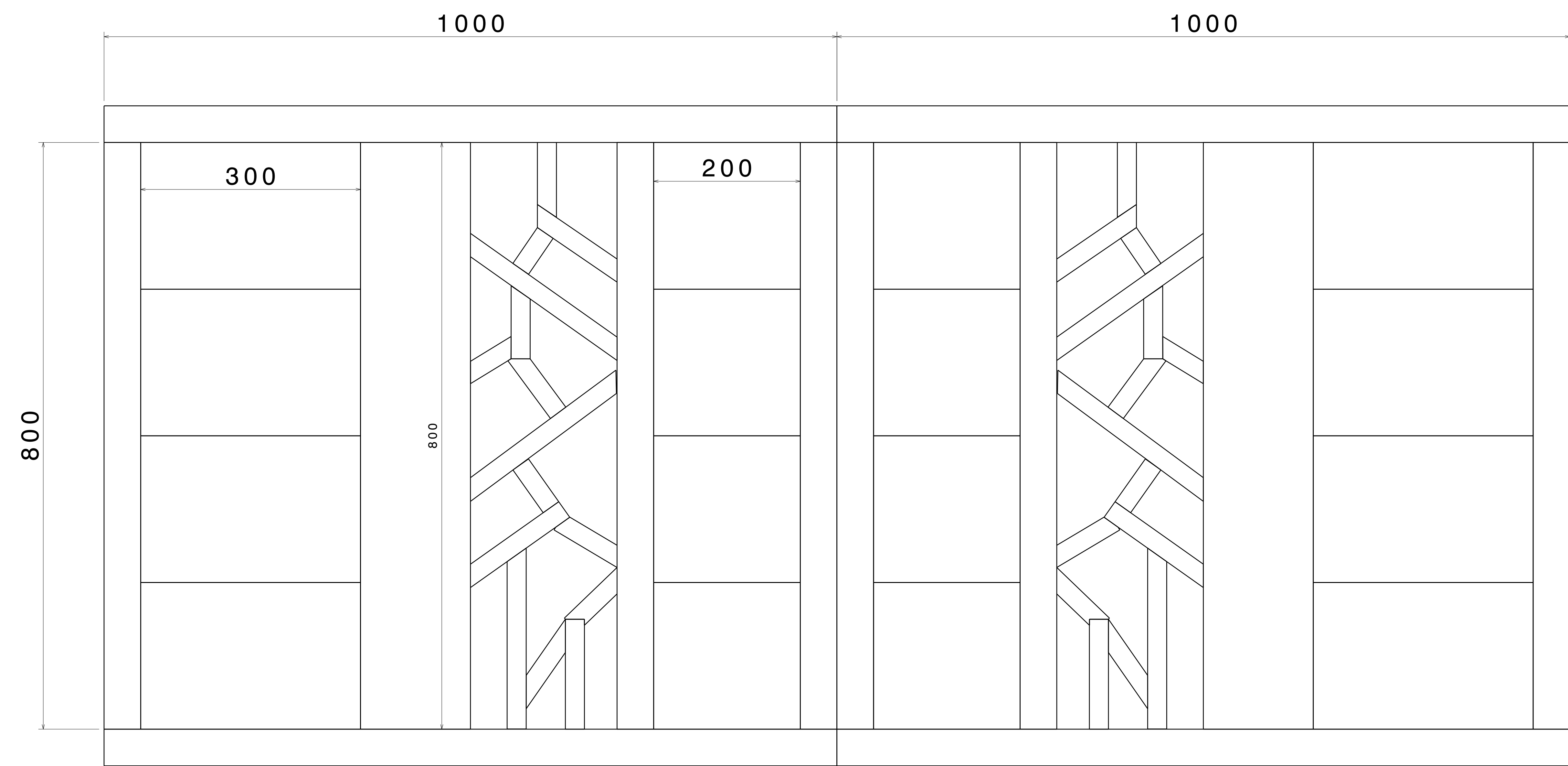
SCALE: As Indicated
WEIGHT (kg): 0kg
SHEET 1 OF 3

UNLESS OTHERWISE SPECIFIED DIMENSION ARE IN MM
VIEWS: THIRD ANGLE PROJECTION

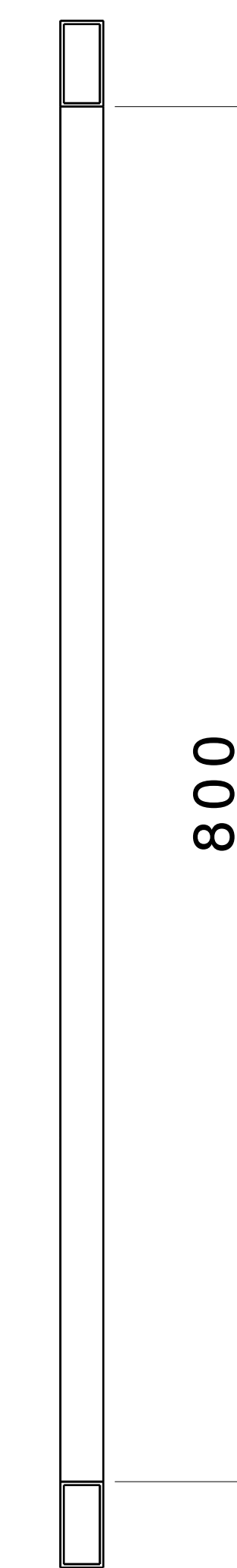
| REV | DATE | DESCRIPTION |
|-----|-----------|------------------|
| 00 | 20MAR2021 | INITIAL REVISION |



Top view
Scale: 3:10



Front view
Scale: 3:10

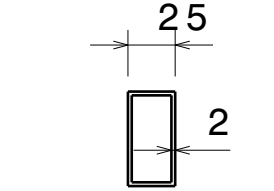
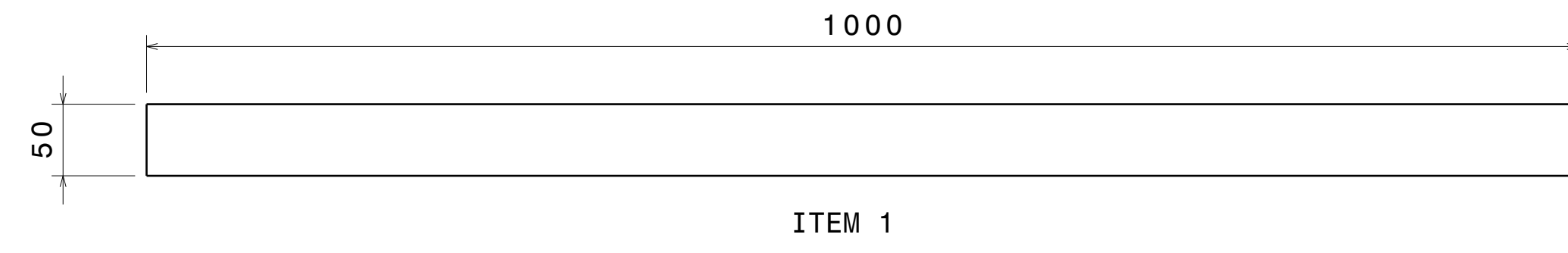


Right view
Scale: 3:10

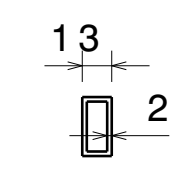
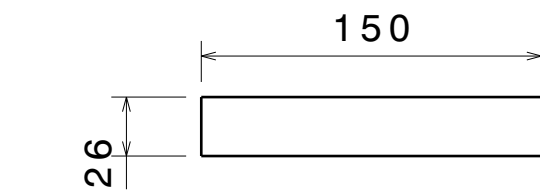
UNLESS OTHERWISE SPECIFIED DIMENSION ARE IN MM
VIEWS: THIRD ANGLE PROJECTION

| | | | |
|---|--|-----------------------|---------------------------------|
| This drawing is our property. It can't be reproduced or communicated without our written agreement. | | APL APOLLO TUBES LTD. | |
| DRAWN BY SB | | DATE 20MAR2021 | |
| CHECKED BY P2P Analysis & Solutions | | DATE 20MAR2021 | |
| DESIGNED BY P2P Analysis & Solutions | | DATE 20MAR2021 | |
| DRAWING TITLE GATE | | SIZE A0 | DRAWING NUMBER P2P MAR 21-09 |
| SCALE NONE | | WEIGHT (kg) XXX | REV 00 |
| | | | SHEET 2 OF 3 |

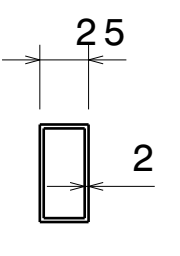
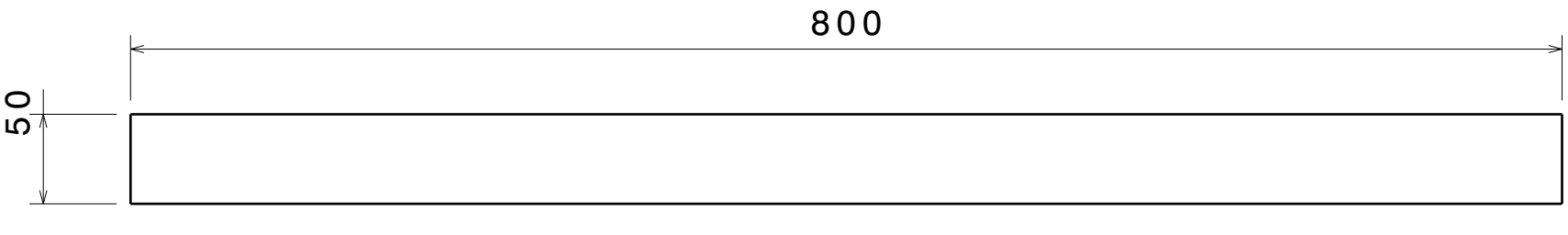
| REV | DATE | DESCRIPTION |
|-----|-----------|------------------|
| 00 | 20MAR2021 | INITIAL REVISION |



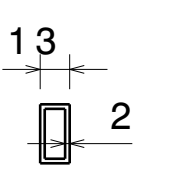
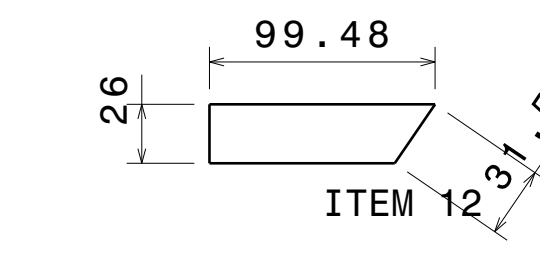
Right view
Scale: 1:4



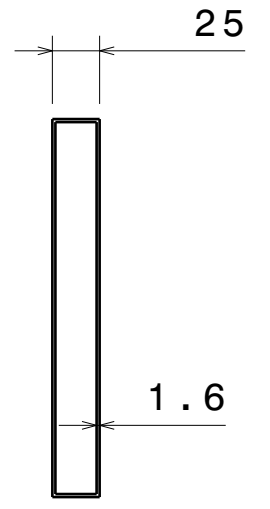
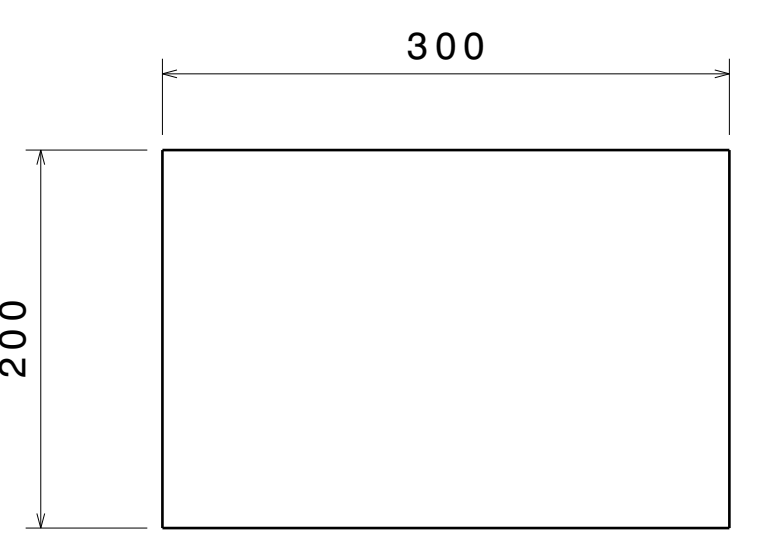
Right view
Scale: 3:10



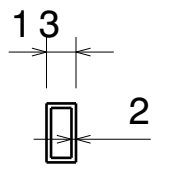
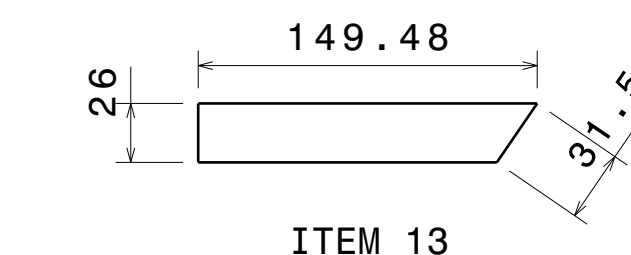
Right view
Scale: 129:500



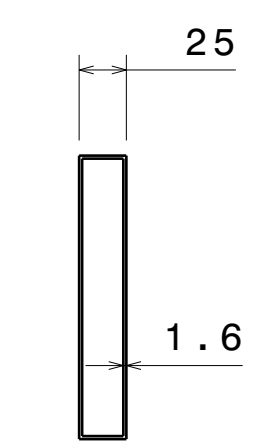
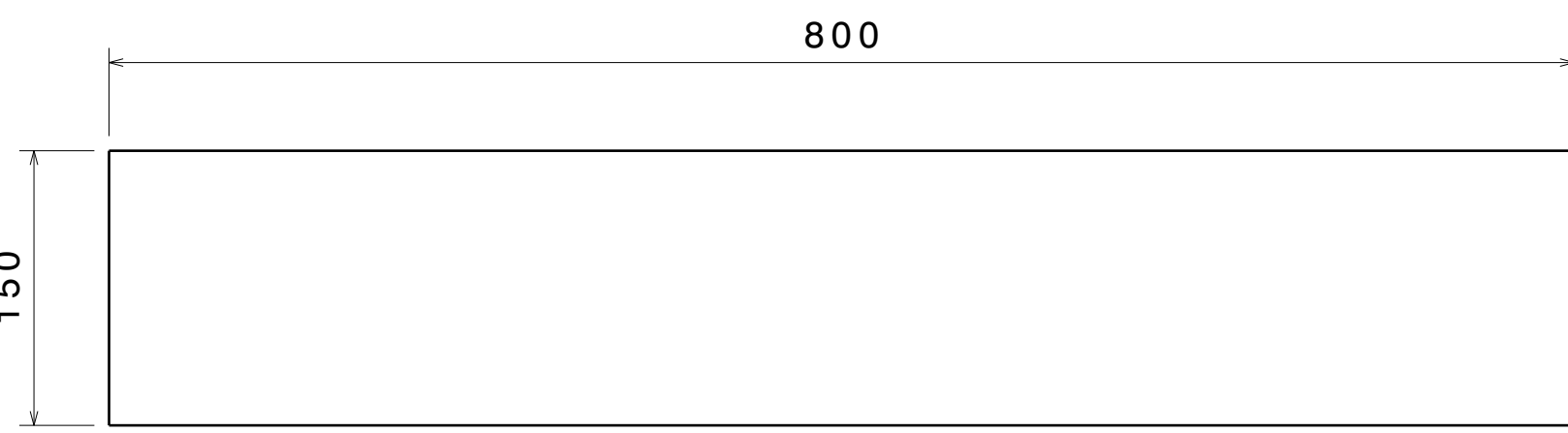
Right view
Scale: 3:10



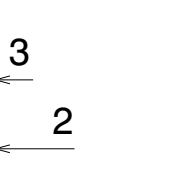
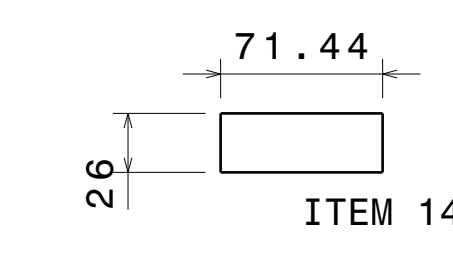
Right view
Scale: 1:4



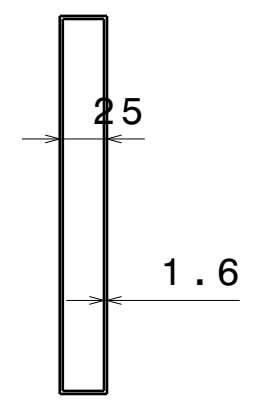
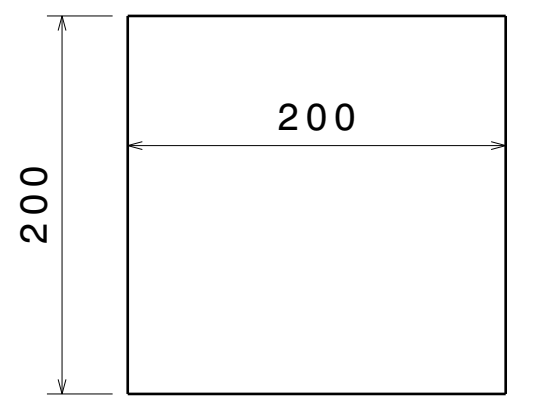
Right view
Scale: 3:10



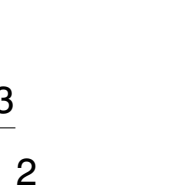
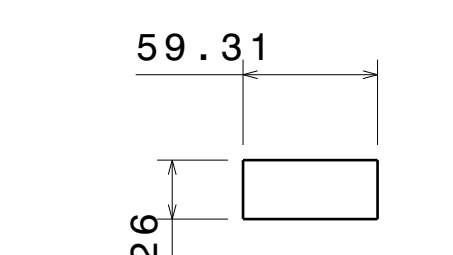
Right view
Scale: 1:4



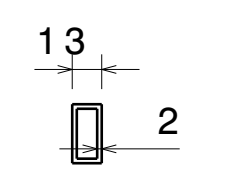
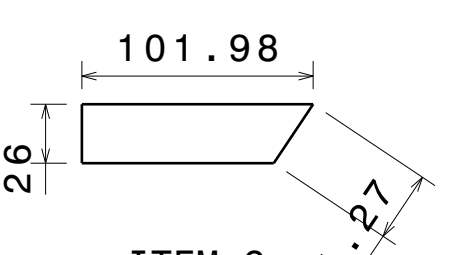
Right view
Scale: 3:10



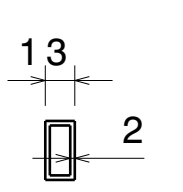
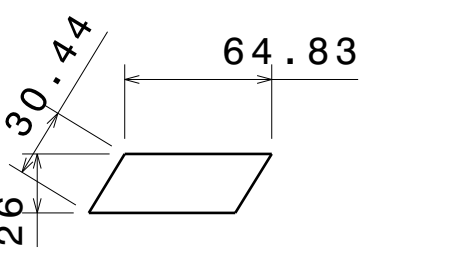
Right view
Scale: 1:4



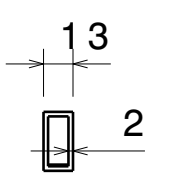
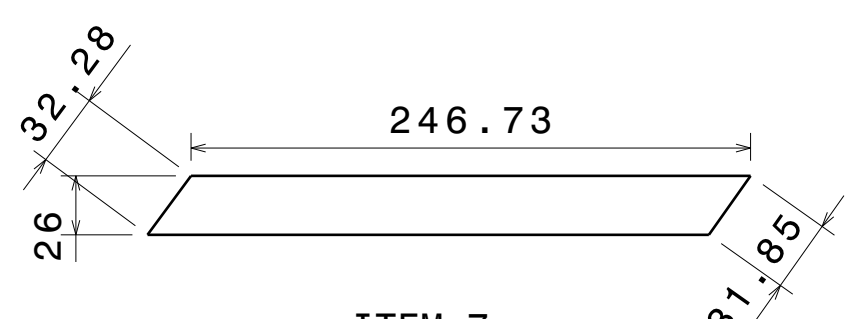
Right view
Scale: 3:10



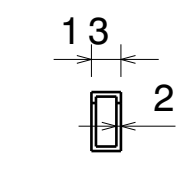
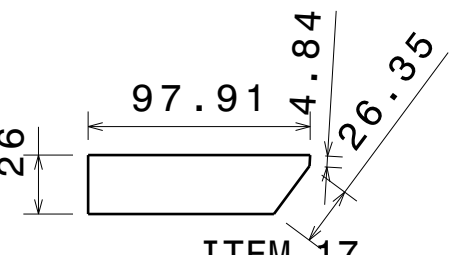
Right view
Scale: 3:10



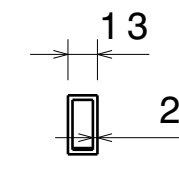
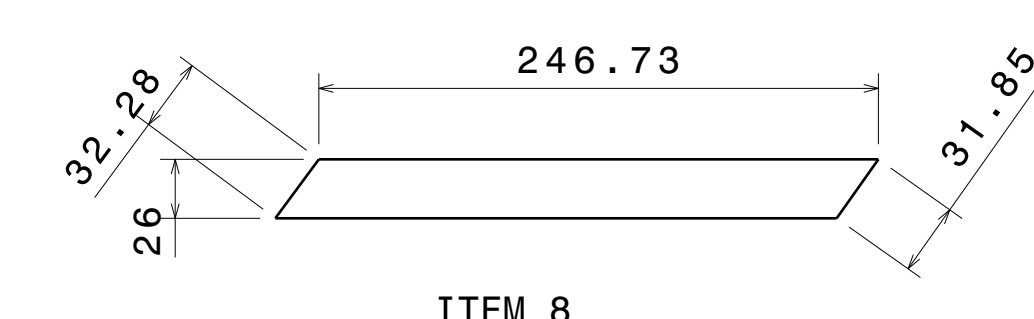
Right view
Scale: 3:10



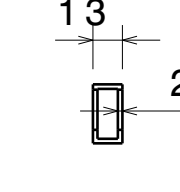
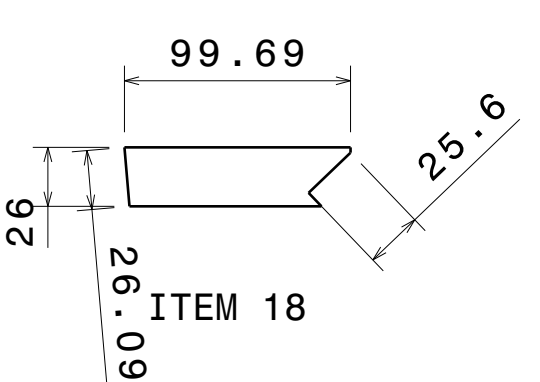
Right view
Scale: 3:10



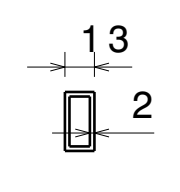
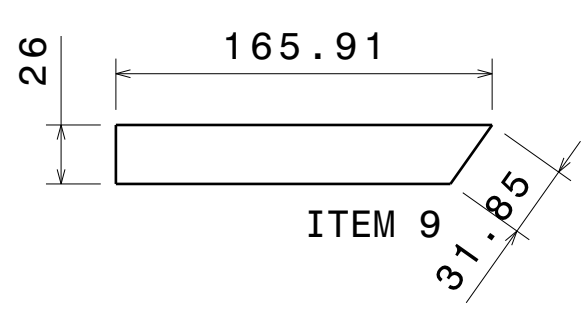
Right view
Scale: 3:10



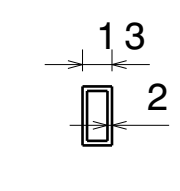
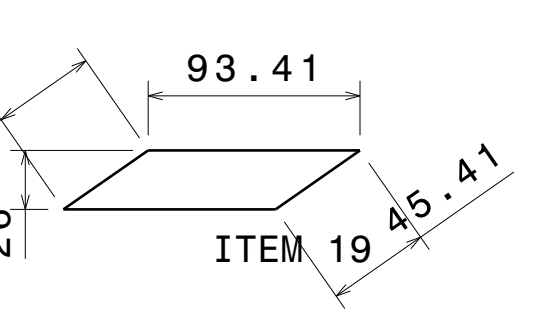
Right view
Scale: 3:10



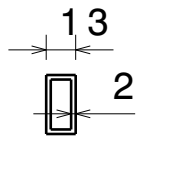
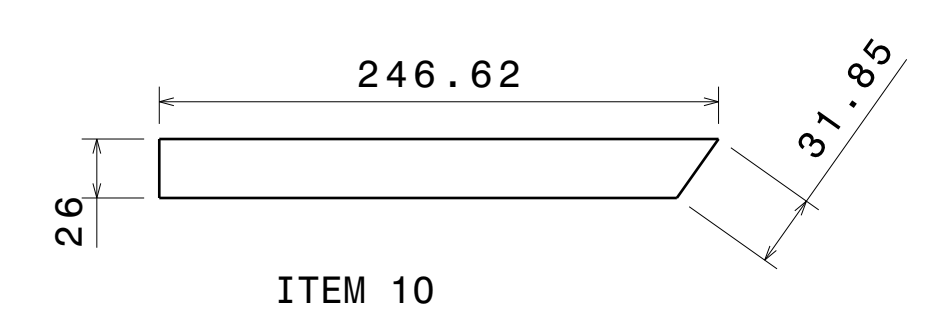
Right view
Scale: 3:10



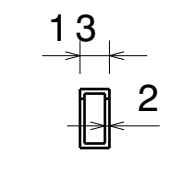
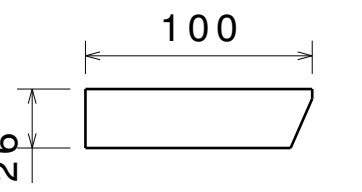
Right view
Scale: 3:10



Right view
Scale: 3:10



Right view
Scale: 3:10



Right view
Scale: 3:10

UNLESS OTHERWISE SPECIFIED DIMENSION ARE IN MM VIEWS: THIRD ANGLE PROJECTION

This drawing is our property. It can't be reproduced or communicated without our written agreement.

DRAWN BY: SB
CHECKED BY: P2P Analysis & Solutions
DESIGNED BY: P2P Analysis & Solutions

DATE: 20MAR2021
DATE: 20MAR2021
DATE: 20MAR2021

| | |
|-----------------------|-------------------------------|
| APL APOLLO TUBES LTD. | |
| DRAWING TITLE: GATE | |
| SIZE: A0 | DRAWING NUMBER: P2P MAR 21-09 |
| SCALE: NONE | WEIGHT (kg): XXX |
| REV: 00 | SHEET 3 OF 3 |