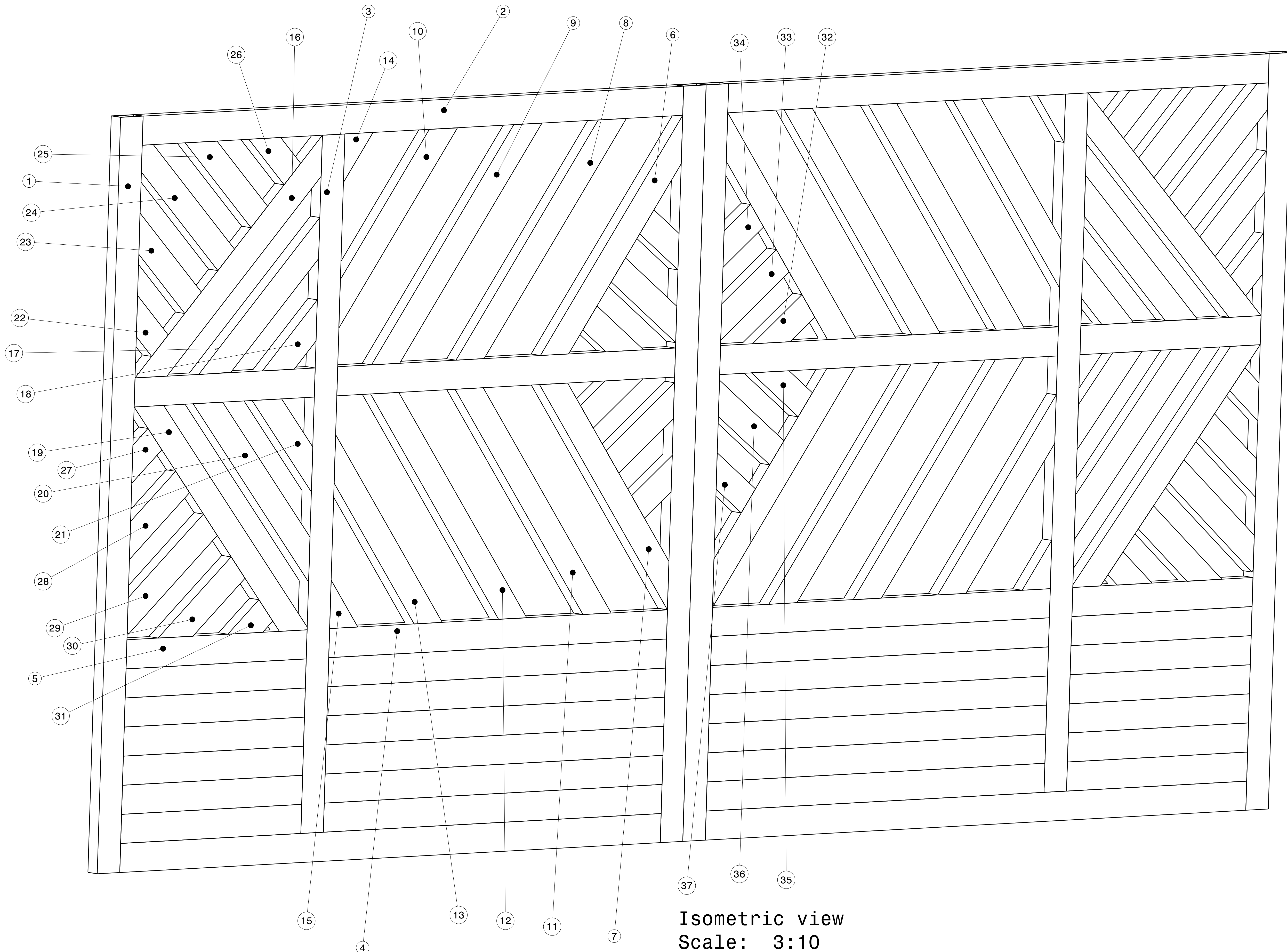


REV/DATE	DESCRIPTION
00 / 25MAR2021	INITIAL REVISION

NOTES:


- (⊥) ALL VERTICAL SUPPORTS ARE PERPENDICULAR.
- FLATNESS OF .5MM IS APPLIED BY DEFAULT.
- ⊥ WELD BEAD OF 2MM RADIUS IS FOLLOWED.
- ▽ SURFACE FINISH MEDIUM TO SMOOTH IS USED.
- ALL TUBES ARE AS PER APL APOLLO STANDARD. CHANGES MAY EFFECT THE LOAD CAPACITY.
- ALL HORIZONTAL AND VERTICAL TUBES ARE PERPENDICULAR TO EACH OTHER WITH ±1 DEG.
- FINE WELDING IS REQUIRED AS PER MENTIONED DETAILS AND FINISHING.
- HIGHER CURRENT WELDING MAY AFFECT THE BRITTLENESS OF MATERIAL WHICH LATER MAY RAISE TO WEAKENING OF STRUCTURE.
- FABRICATORS ARE ALLOWED TO USE FITTINGS/FRAMES/SUPPORTS AS NEEDED AND THE SAME MUST BE COMMUNICATED BACK TO ENGINEERING TEAM.
- BOP COMPONENT WEIGHTS ARE FOR REFERENCE ONLY AND SUBJECTED TO CHANGE PER PURCHASED COMPONENTS.



Isometric view  
Scale: 3:10

ITEM NO.	PART NUMBER	DESCRIPTION	QTY.	Wt(Kg)/Each
37	RHS FRAME 37	50 X 25 X 2 X 150	2	0.10
36	RHS FRAME 36	50 X 25 X 2 X 200	2	0.25
35	RHS FRAME 35	50 X 25 X 2 X 150	2	0.10
34	RHS FRAME 34	50 X 25 X 2 X 150	2	0.10
33	RHS FRAME 33	50 X 25 X 2 X 200	2	0.25
32	RHS FRAME 32	50 X 25 X 2 X 150	2	0.10
31	RHS FRAME 31	50 X 25 X 2 X 100	2	0.15
30	RHS FRAME 30	50 X 25 X 2 X 250	2	0.35
29	RHS FRAME 29	50 X 25 X 2 X 250	2	0.35
28	RHS FRAME 28	50 X 25 X 2 X 200	2	0.25
27	RHS FRAME 27	50 X 25 X 2 X 100	2	0.15
26	RHS FRAME 26	50 X 25 X 2 X 150	2	0.10
25	RHS FRAME 25	50 X 25 X 2 X 250	2	0.35
24	RHS FRAME 24	50 X 25 X 2 X 300	2	0.60
23	RHS FRAME 23	50 X 25 X 2 X 200	2	0.25
22	RHS FRAME 22	50 X 25 X 2 X 100	2	0.15
21	RHS FRAME 21	50 X 25 X 2 X 250	2	0.35
20	RHS FRAME 20	50 X 25 X 2 X 450	2	0.80
19	RHS FRAME 19	50 X 25 X 2 X 600	2	1.15
18	RHS FRAME 18	50 X 25 X 2 X 200	2	0.25
17	RHS FRAME 17	50 X 25 X 2 X 400	2	0.90
16	RHS FRAME 16	50 X 25 X 2 X 600	2	1.15
15	RHS FRAME 15	50 X 25 X 2 X 150	2	0.10
14	RHS FRAME 14	50 X 25 X 2 X 150	2	0.10
13	RHS FRAME 13	50 X 25 X 2 X 450	2	0.80
12	RHS FRAME 12	50 X 25 X 2 X 550	2	1.10
11	RHS FRAME 11	50 X 25 X 2 X 550	2	1.10
10	RHS FRAME 10	50 X 25 X 2 X 450	2	0.80
9	RHS FRAME 9	50 X 25 X 2 X 550	2	1.10
8	RHS FRAME 8	50 X 25 X 2 X 550	2	1.10
7	RHS FRAME 7	50 X 25 X 2 X 500	2	1
6	RHS FRAME 6	50 X 25 X 2 X 500	2	1
5	RHS FRAME 5	50 X 25 X 2 X 400	16	0.90
4	RHS FRAME 4	50 X 25 X 2 X 750	16	1.70
3	RHS FRAME 3	50 X 25 X 2 X 1200	2	2.70
2	RHS FRAME 2	50 X 25 X 2 X 1200	4	2.70
1	RHS FRAME 1	50 X 25 X 2 X 1300	4	2.90

This drawing is our property. It can't be reproduced or communicated without our written agreement.

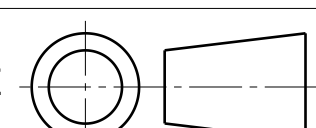
**APL APOLLO TUBES LTD.** 

DRAWING TITLE: **GATE**

SCALE: **A0** DRAWING NUMBER: **P2P MAR 21-15** REV: **00**

SCALE: **As Indicated** WEIGHT(kg) **0kg** SHEET **1 OF 3**

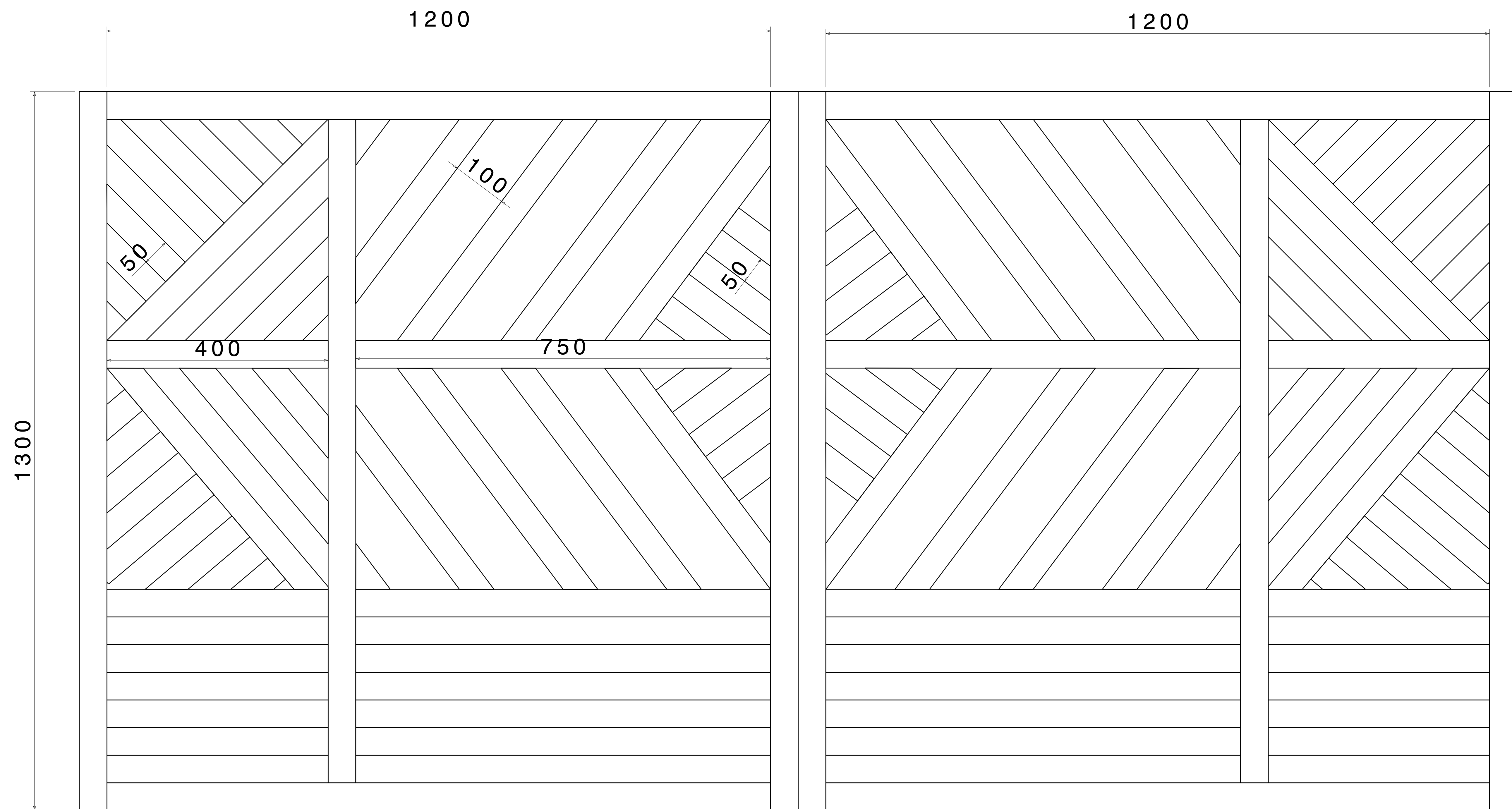
UNLESS OTHERWISE SPECIFIED DIMENSION ARE IN MM VIEWS: THIRD ANGLE PROJECTION



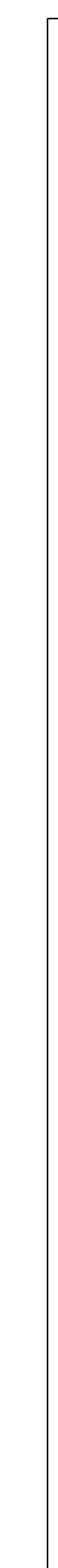
REV	DATE	DESCRIPTION
00	25MAR2021	INITIAL REVISION



Top view  
Scale: 1:4



Front view  
Scale: 1:4

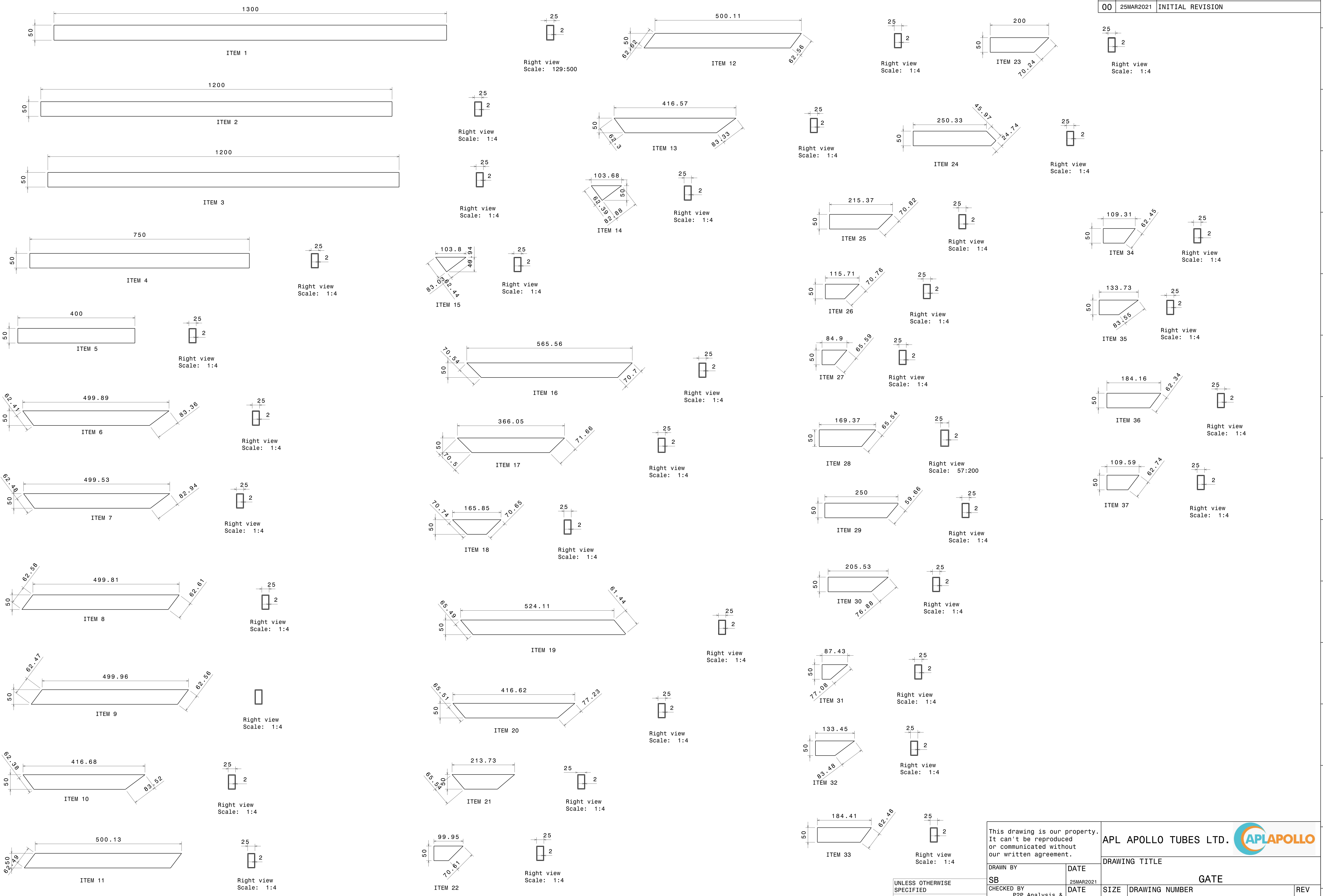



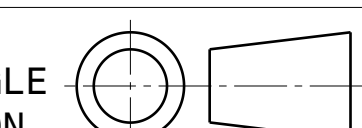
Right view  
Scale: 1:4

UNLESS OTHERWISE SPECIFIED DIMENSION ARE IN MM  
VIEWS: THIRD ANGLE PROJECTION

This drawing is our property. It can't be reproduced or communicated without our written agreement.		APL APOLLO TUBES LTD.	
DRAWN BY SB		DATE 25MAR2021	
CHECKED BY P2P Analysis & Solutions		DATE 25MAR2021	
DESIGNED BY P2P Analysis & Solutions		DATE 25MAR2021	
DRAWING TITLE GATE		SIZE A0	DRAWING NUMBER P2P MAR 21-15
SCALE NONE		WEIGHT (kg) XXX	REV 00
		SHEET 2 OF 3	

REV	DATE	DESCRIPTION
00	25MAR2021	INITIAL REVISION



This drawing is our property. It can't be reproduced or communicated without our written agreement.		APL APOLLO TUBES LTD. 	
DRAWN BY SB		DATE 25MAR2021	
CHECKED BY P2P Analysis & Solutions		DATE 25MAR2021	
DESIGNED BY P2P Analysis & Solutions		DATE 25MAR2021	
UNLESS OTHERWISE SPECIFIED DIMENSION ARE IN MM		DRAWING TITLE GATE	
VIEWS: THIRD ANGLE PROJECTION 		SIZE A0	DRAWING NUMBER P2P MAR 21-15
		SCALE NONE	WEIGHT (kg) XXX
		REV 00	
		SHEET 3 OF 3	