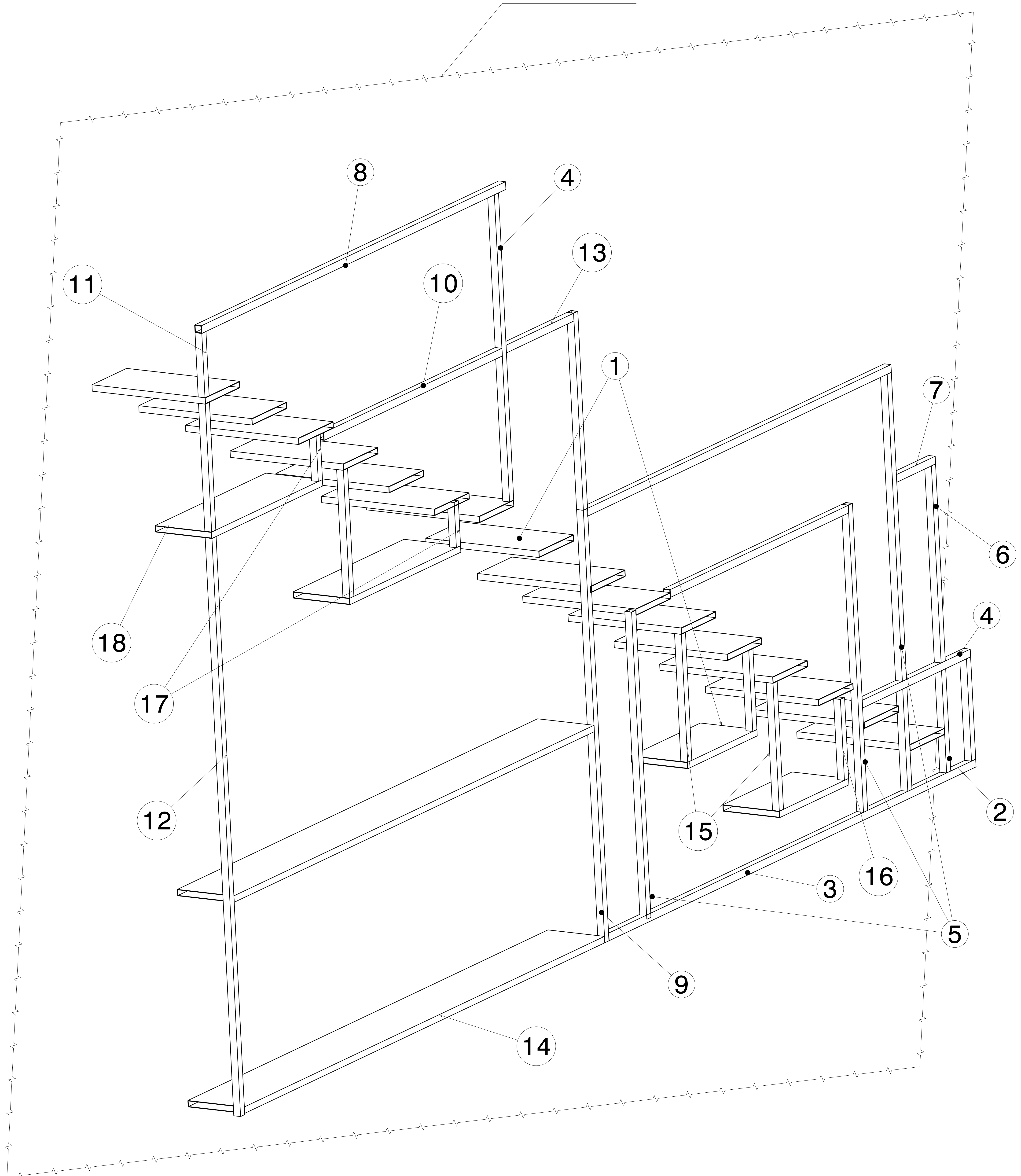


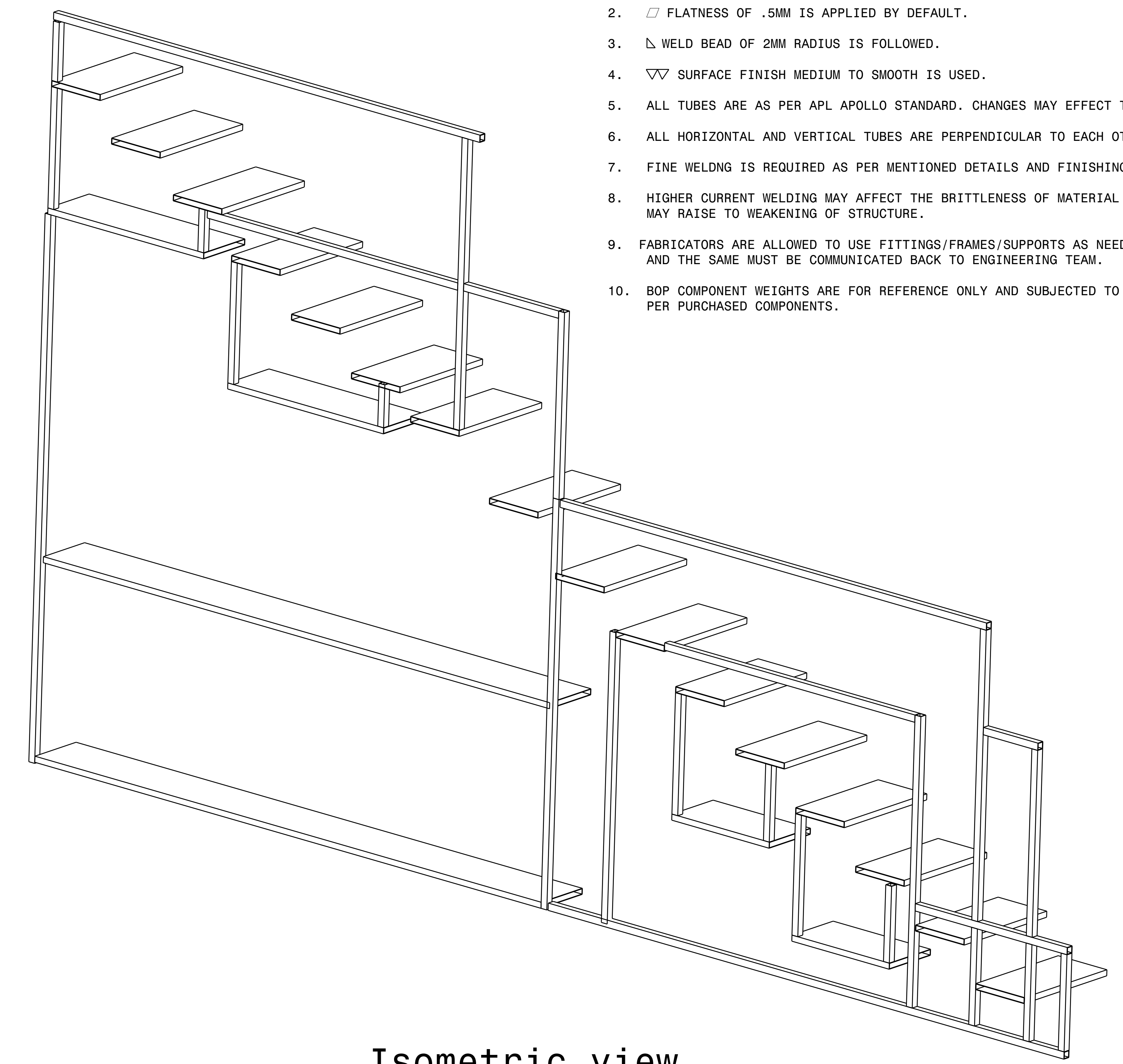
REV/DATE	DESCRIPTION
00 / 27MAY2021	INITIAL REVISION

- NOTES:
- (⊥) ALL VERTICAL SUPPORTS ARE PERPENDICULAR.
  - FLATNESS OF .5MM IS APPLIED BY DEFAULT.
  - ⊘ WELD BEAD OF 2MM RADIUS IS FOLLOWED.
  - ▽ SURFACE FINISH MEDIUM TO SMOOTH IS USED.
  - ALL TUBES ARE AS PER APL APOLLO STANDARD. CHANGES MAY EFFECT THE LOAD CAPACITY.
  - ALL HORIZONTAL AND VERTICAL TUBES ARE PERPENDICULAR TO EACH OTHER WITH ±1 DEG.
  - FINE WELDING IS REQUIRED AS PER MENTIONED DETAILS AND FINISHING.
  - HIGHER CURRENT WELDING MAY AFFECT THE BRITTLENESS OF MATERIAL WHICH LATER MAY RAISE TO WEAKENING OF STRUCTURE.
  - FABRICATORS ARE ALLOWED TO USE FITTINGS/FRAMES/SUPPORTS AS NEEDED AND THE SAME MUST BE COMMUNICATED BACK TO ENGINEERING TEAM.
  - BOP COMPONENT WEIGHTS ARE FOR REFERENCE ONLY AND SUBJECTED TO CHANGE PER PURCHASED COMPONENTS.

WALL PROFILE



Isometric view



Isometric view (Simplified)

ITEM NO.	PART NUMBER	DESCRIPTION	QTY.	Wt (Kg)/Each
18	PLANK 3	250 X 25 X 1.6 X 800	2	5.5
17	SHS 18	30 X 30 X 2 X 176.6	2	0.3
16	SHS 17	30 X 30 X 2 X 316.3	2	0.56
15	SHS 16	30 X 30 X 2 X 500	4	1.2
14	PLANK 2	250 X 25 X 1.6 X 2600	2	17.8
13	SHS 15	30 X 30 X 2 X 488	1	1
12	SHS 14	30 X 30 X 2 X 2260	1	4.3
11	SHS 13	30 X 30 X 2 X 251.2	1	0.44
10	SHS 9	30 X 30 X 2 X 1286	2	2.2
9	SHS 8	30 X 30 X 2 X 1690	1	3
8	SHS 7	30 X 30 X 2 X 2195.5	2	3.9
7	SHS 6	30 X 30 X 2 X 280	1	0.5
6	SHS 5	30 X 30 X 2 X 770	2	1.35
5	SHS 4	30 X 30 X 2 X 1200	4	2.11
4	SHS 3	30 X 30 X 2 X 780	1	1.37
3	SHS 2	30 X 30 X 2 X 2649	1	4.7
2	SHS 1	30 X 30 X 2 X 400	3	0.7
1	STAIR PLANK	250 X 25 X 1.6 X 500	18	3.42

This drawing is our property. It can't be reproduced or communicated without our written agreement.  
www.p2p.ind.in

APL APOLLO TUBES LTD.

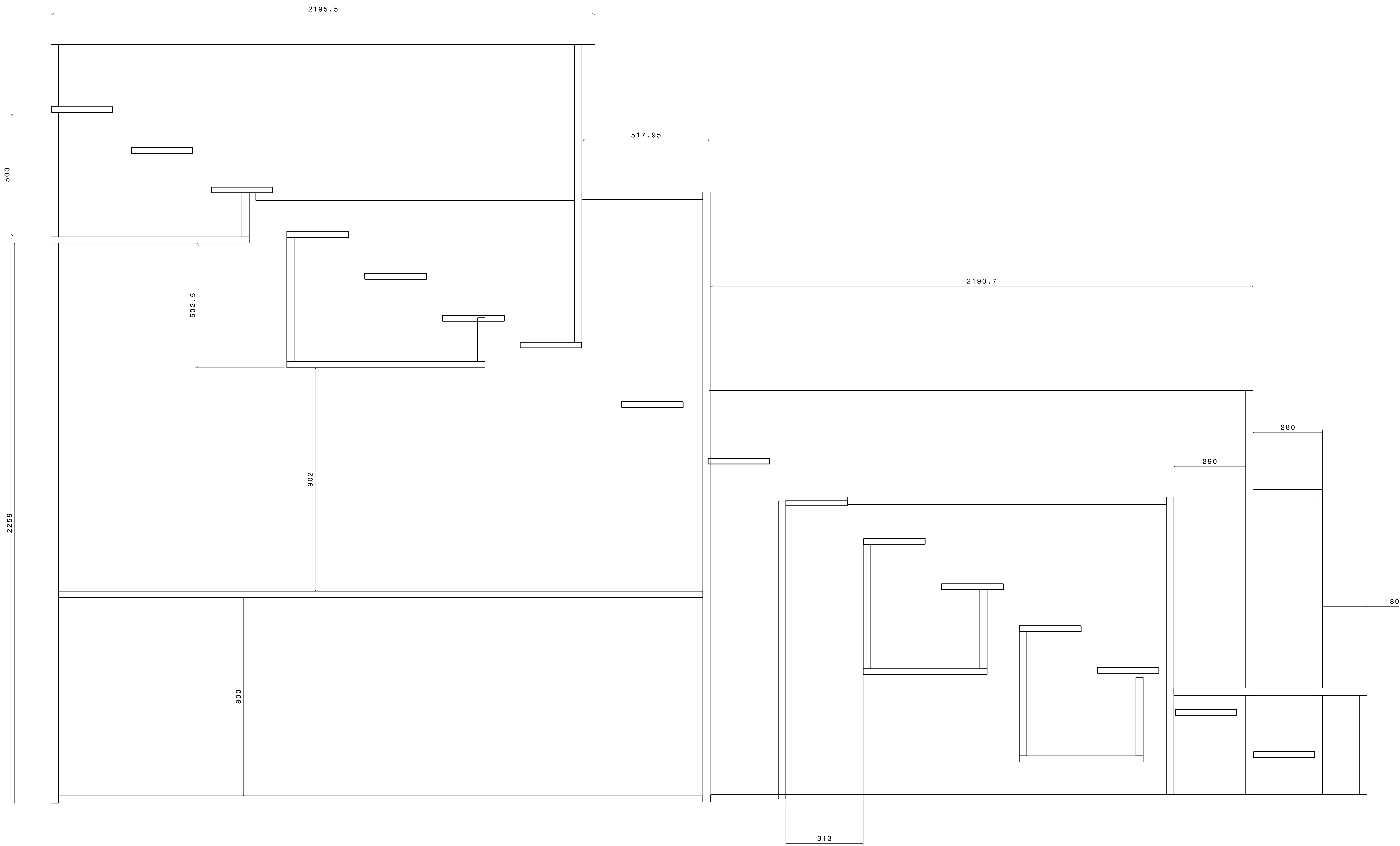
DRAWING TITLE: LADDER

DRAWN BY: RR	DATE: 27MAY2021	CHECKED BY: P2P Analysis & Solutions	DATE: 27MAY2021	DESIGNED BY: P2P Analysis & Solutions	DATE: 27MAY2021
--------------	-----------------	--------------------------------------	-----------------	---------------------------------------	-----------------

SIZE: A0	DRAWING NUMBER: P2P MAY 21-01	REV: 00
SCALE: As Indicated	WEIGHT (kg): 0kg	SHEET 1 OF 3

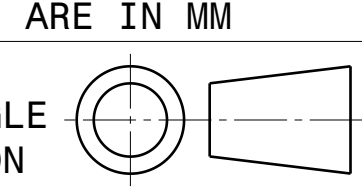
UNLESS OTHERWISE SPECIFIED DIMENSION ARE IN MM  
VIEWS: THIRD ANGLE PROJECTION

REV	DATE	DESCRIPTION
00	27MAY2021	INITIAL REVISION




Front view  
Scale: 9:50

UNLESS OTHERWISE SPECIFIED DIMENSION ARE IN MM  
VIEWS: THIRD ANGLE PROJECTION

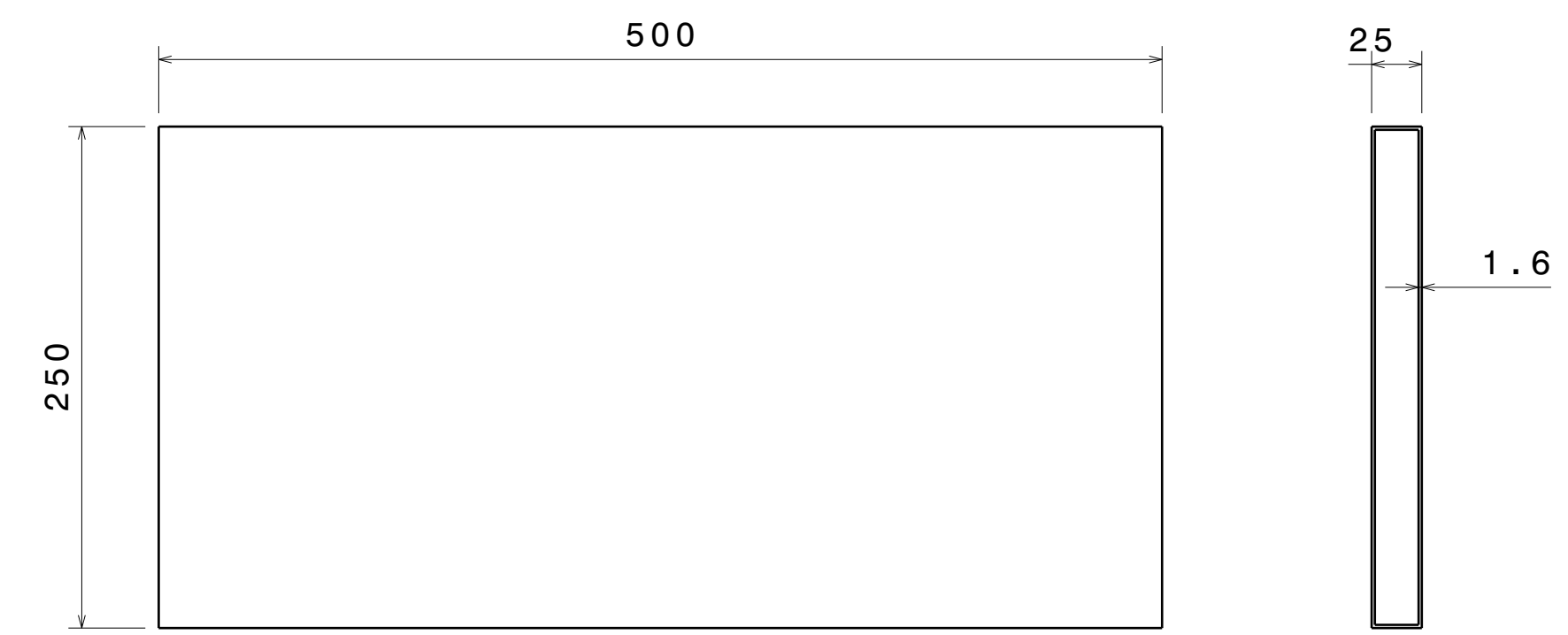


This drawing is our property. It can't be reproduced or communicated without our written agreement.  
www.p2p.ind.in

DRAWN BY	SB	DATE	27MAY2021
CHECKED BY	P2P Analysis & Solutions	DATE	27MAY2021
DESIGNED BY	P2P Analysis & Solutions	DATE	27MAY2021

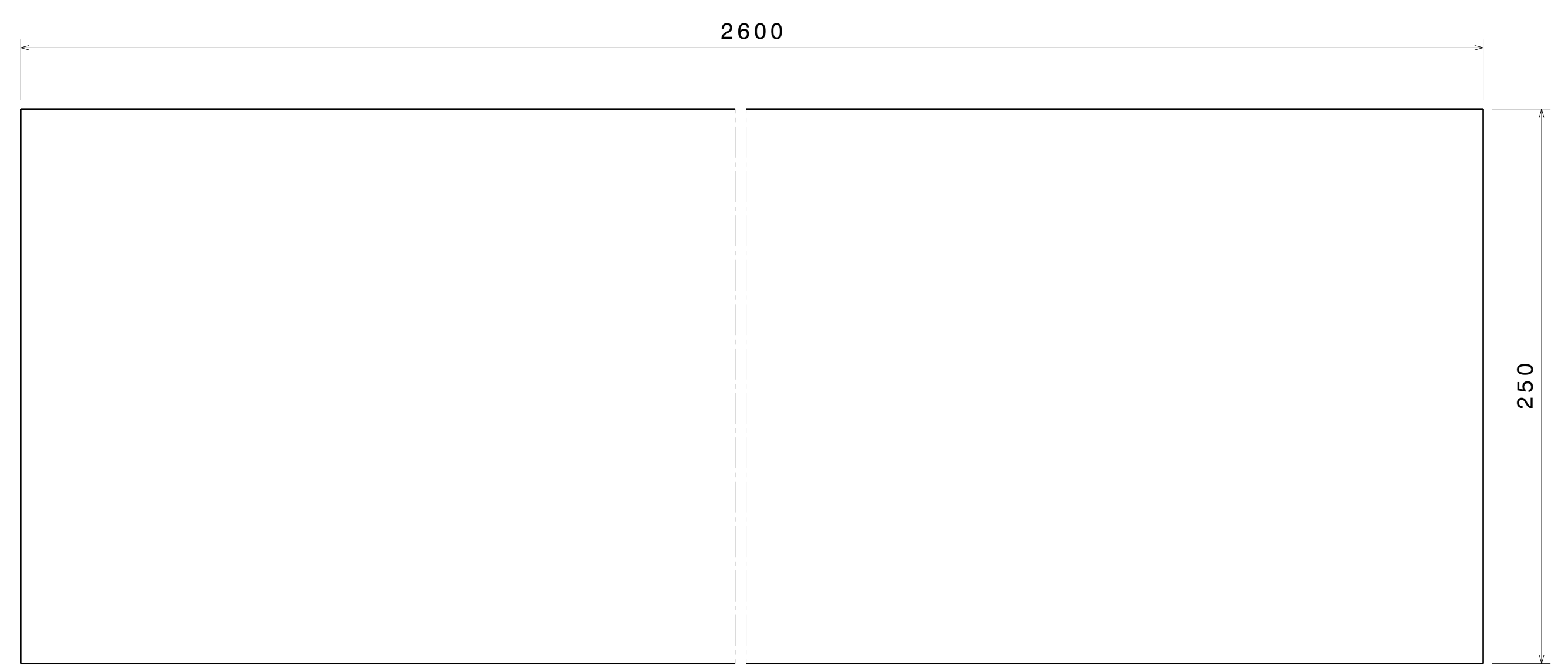
APL APOLLO TUBES LTD. 			
DRAWING TITLE			
LADDER			
SIZE	DRAWING NUMBER	REV	
A0	P2P MAY 21-01	00	
SCALE	NONE	WEIGHT (kg)	XXX
			SHEET 2 OF 3

REV	DATE	DESCRIPTION
00	27MAY2021	INITIAL REVISION



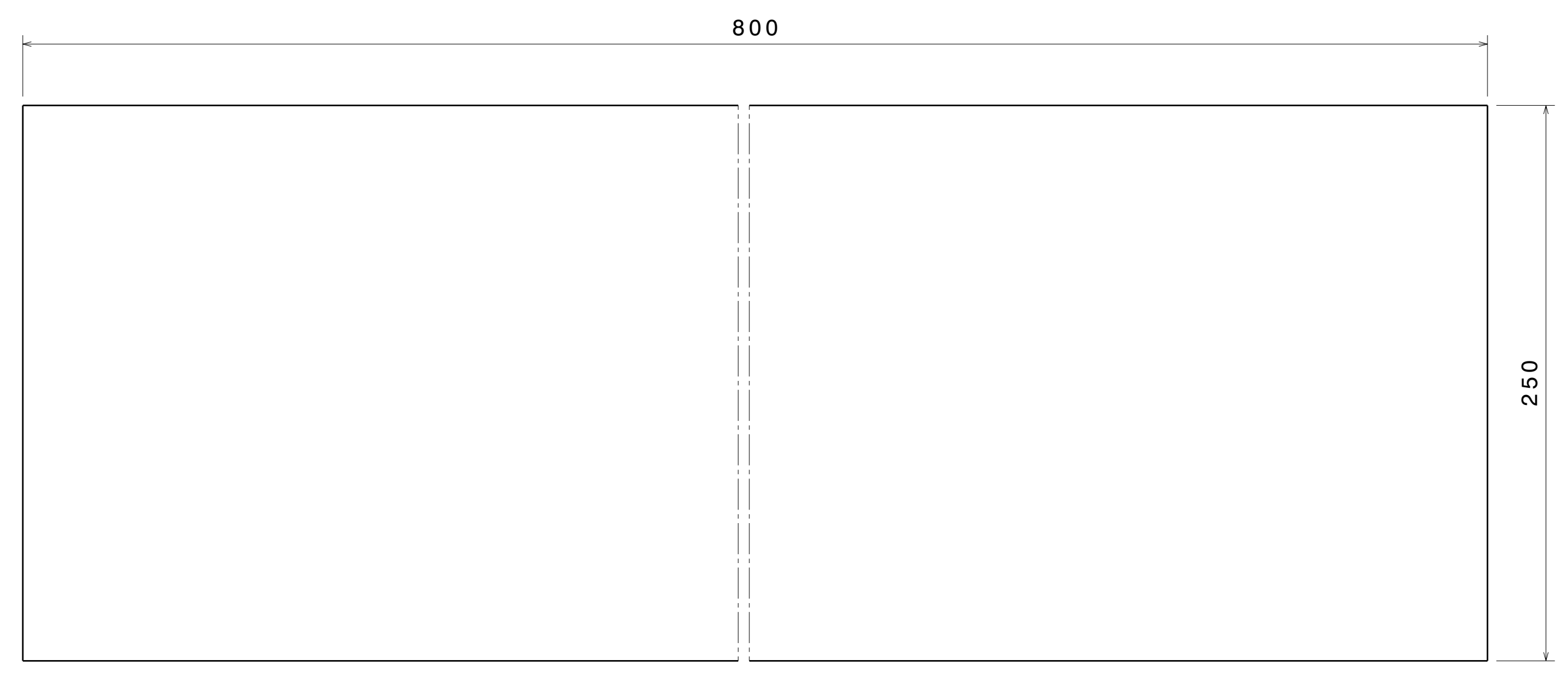
ITEM 1

Right view  
Scale: 3:10



ITEM 14

Right view  
Scale: 1:2



ITEM 18

Right view[2]  
Scale: 1:2

PLEASE NOTE:  
ALL SHS TUBES ARE OF 30 X 30 X 2 MM THICK,  
LENGTHS ARE TO BE REFERRED AS SPECIFIED  
IN THE BILL OF MATERIAL

UNLESS OTHERWISE SPECIFIED DIMENSION ARE IN MM  
VIEWS: THIRD ANGLE PROJECTION

This drawing is our property. It can't be reproduced or communicated without our written agreement.  
www.p2p.ind.in

DRAWN BY	SB	DATE	27MAY2021
CHECKED BY	P2P Analysis & Solutions	DATE	27MAY2021
DESIGNED BY	P2P Analysis & Solutions	DATE	27MAY2021

APL APOLLO TUBES LTD.	
DRAWING TITLE	
LADDER	
SIZE	A0
DRAWING NUMBER	P2P MAY 21-01
REV	00
SCALE	NONE
WEIGHT (kg)	XXX
SHEET 3 OF 3	