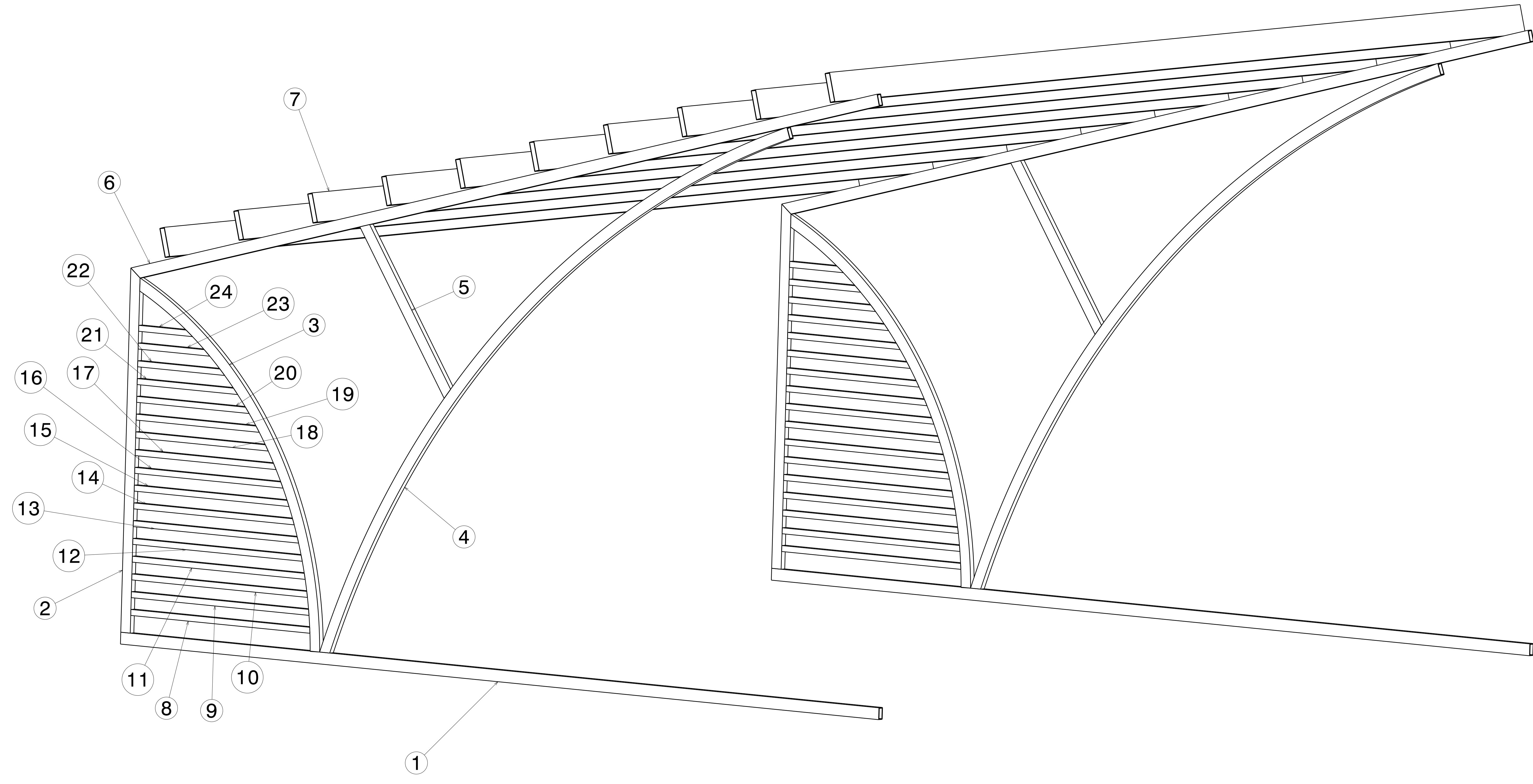


REV	DATE	DESCRIPTION
00	17MAY2021	INITIAL REVISION

- NOTES:
- (⊥) ALL VERTICAL SUPPORTS ARE PERPENDICULAR.
  - FLATNESS OF .5MM IS APPLIED BY DEFAULT.
  - ⊥ WELD BEAD OF 2MM RADIUS IS FOLLOWED.
  - ▽▽ SURFACE FINISH MEDIUM TO SMOOTH IS USED.
  - ALL TUBES ARE AS PER APL APOLLO STANDARD. CHANGES MAY EFFECT THE LOAD CAPACITY.
  - ALL HORIZONTAL AND VERTICAL TUBES ARE PERPENDICULAR TO EACH OTHER WITH ±1 DEG.
  - FINE WELDING IS REQUIRED AS PER MENTIONED DETAILS AND FINISHING.
  - HIGHER CURRENT WELDING MAY AFFECT THE BRITTLNESS OF MATERIAL WHICH LATER MAY RAISE TO WEAKENING OF STRUCTURE.
  - FABRICATORS ARE ALLOWED TO USE FITTINGS/FRAMES/SUPPORTS AS NEEDED AND THE SAME MUST BE COMMUNICATED BACK TO ENGINEERING TEAM.
  - BOP COMPONENT WEIGHTS ARE FOR REFERENCE ONLY AND SUBJECTED TO CHANGE PER PURCHASED COMPONENTS.



Isometric view 1  
Scale: 3:25

ITEM NO.	PART NUMBER	DESCRIPTION	QTY.	Wt (Kg) /Each
24	RHS 23	25 X 25 X 1.6 X 285	2	0.6
23	RHS 22	25 X 25 X 1.6 X 378	2	0.8
22	RHS 21	25 X 25 X 1.6 X 460	2	0.96
21	RHS 20	25 X 25 X 1.6 X 531	2	1.02
20	RHS 19	25 X 25 X 1.6 X 594	2	1.1
19	RHS 18	25 X 25 X 1.6 X 650	2	1.2
18	RHS 17	25 X 25 X 1.6 X 700	2	1.3
17	RHS 16	25 X 25 X 1.6 X 744	2	1.38
16	RHS 15	25 X 25 X 1.6 X 783	2	1.46
15	RHS 14	25 X 25 X 1.6 X 817	2	1.52
14	RHS 13	25 X 25 X 1.6 X 847	2	1.6
13	RHS 12	25 X 25 X 1.6 X 873	2	1.7
12	RHS 11	25 X 25 X 1.6 X 895	2	1.78
11	RHS 10	25 X 25 X 1.6 X 913	2	1.83
10	RHS 9	25 X 25 X 1.6 X 928	2	1.9
9	RHS 8	25 X 25 X 1.6 X 938	2	1.94
8	RHS 7	25 X 25 X 1.6 X 946	2	2
7	PLANK 1	125 X 25 X 1.6 X 4800	10	18
6	RHS 6	50 X 25 X 2.6 X 4040	2	11.5
5	RHS 5	50 X 25 X 2.6 X 832	2	2.33
4	RHS 4 - curved	50 X 25 X 2.6 X 3500	2	9.9
3	RHS 3 - curved	50 X 25 X 2.6 X 1900	2	5.31
2	RHS 2	50 X 25 X 2.6 X 1538.4	2	4.35
1	RHS 1	50 X 25 X 2.6 X 4000	2	11.4

This drawing is our property. It can't be reproduced or communicated without our written agreement.  
www.p2p.ind.in

APL APOLLO TUBES LTD.

DRAWING TITLE: **PARKING SHED**

CHECKED BY: RR, DATE: 17MAY2021

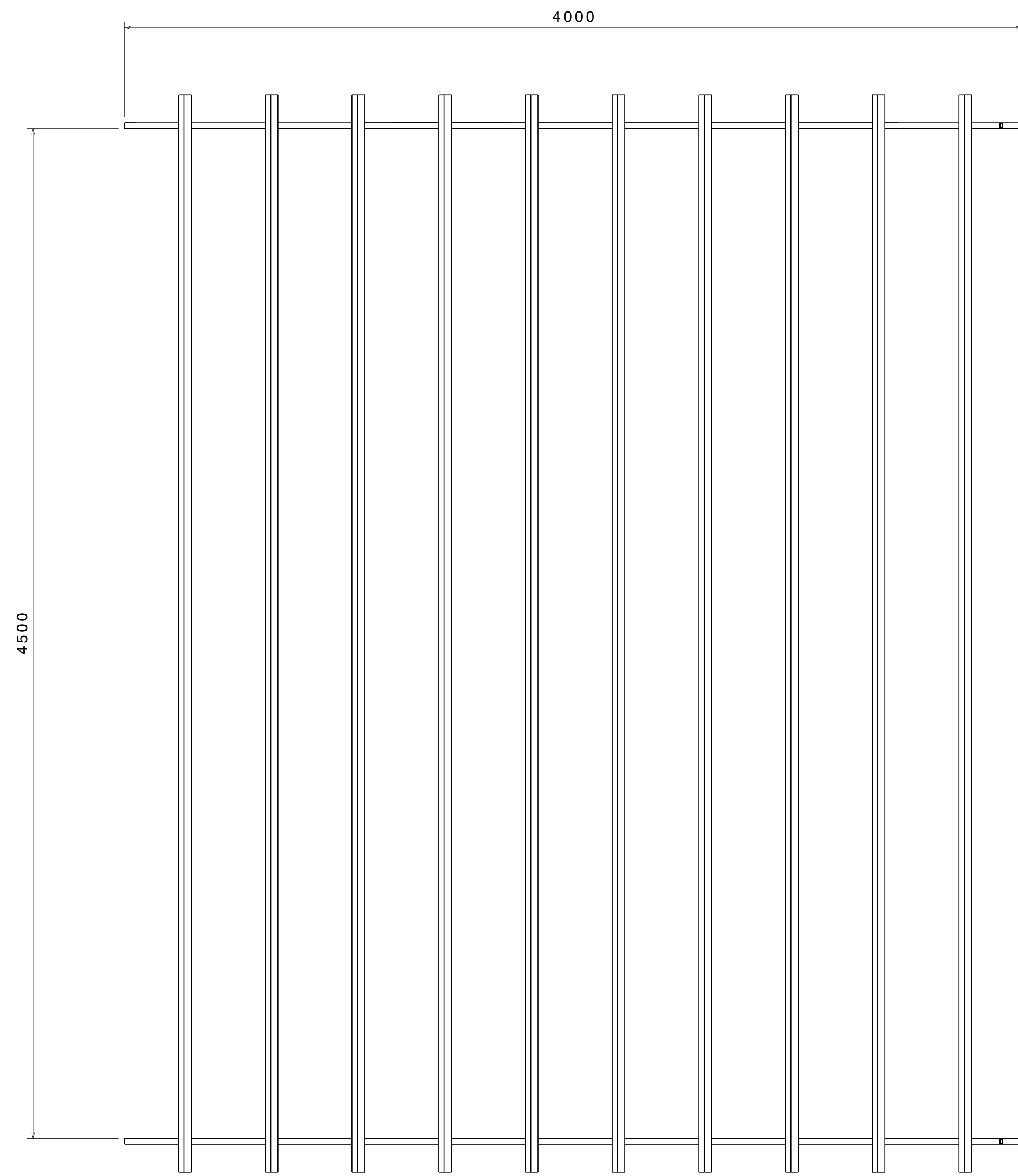
DESIGNED BY: P2P Analysis & Solutions, DATE: 17MAY2021

SCALE: A0, DRAWING NUMBER: P2P MAY 21-13, REV: 00

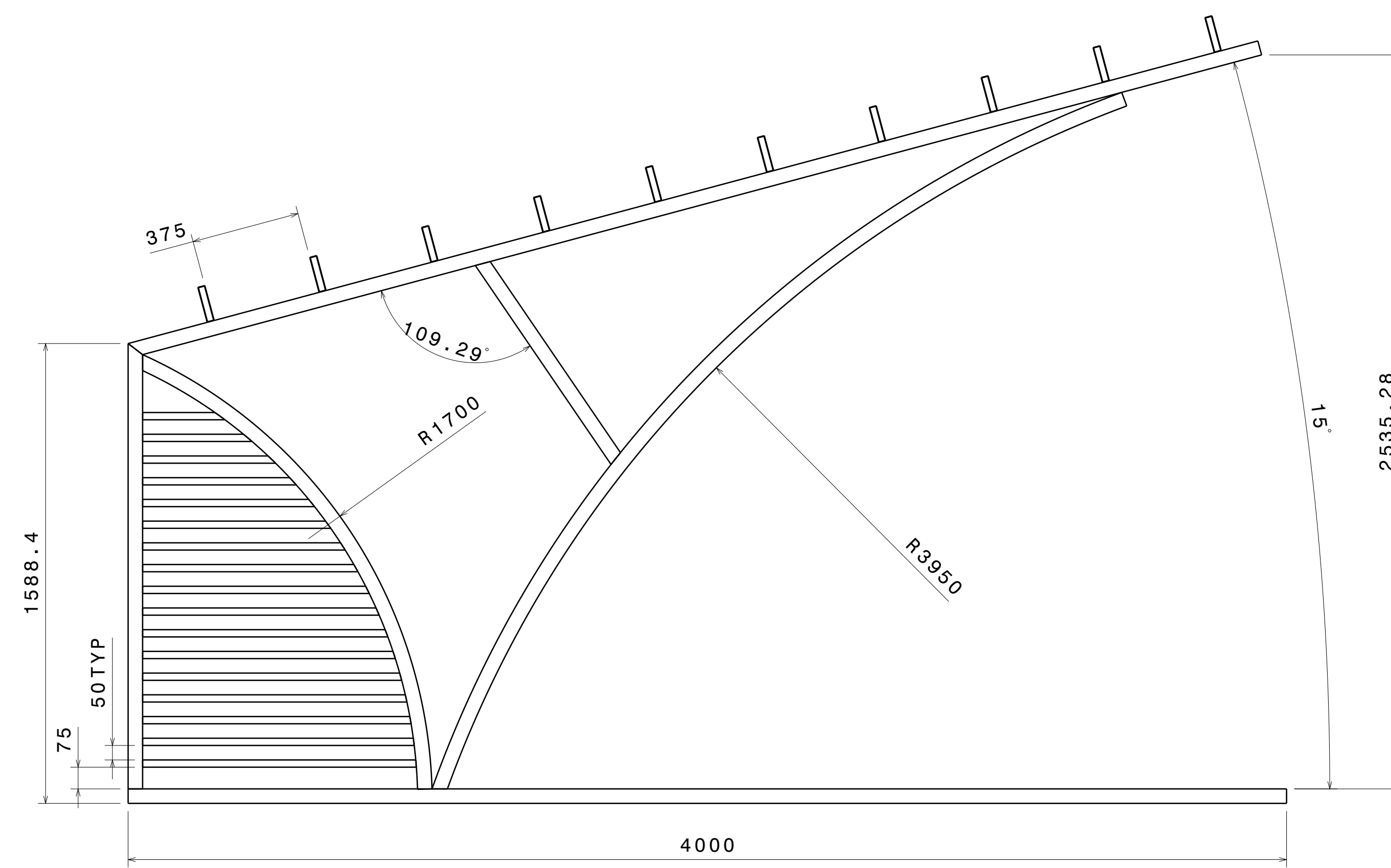
WEIGHT (kg): 0kg, SHEET 1 OF 3

UNLESS OTHERWISE SPECIFIED DIMENSION ARE IN MM  
VIEWS: THIRD ANGLE PROJECTION

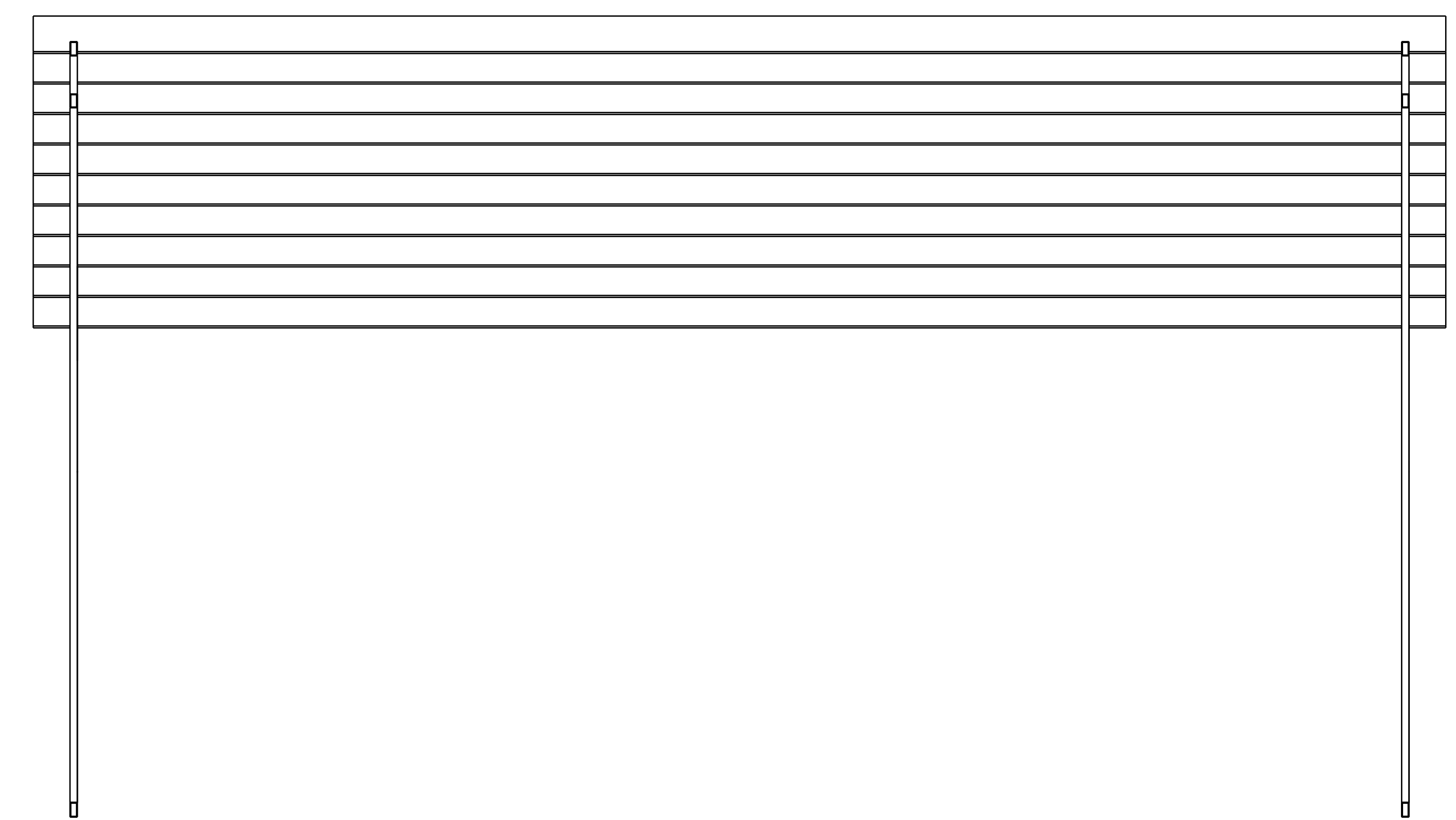
REV	DATE	DESCRIPTION
00	17MAY2021	INITIAL REVISION



Top view  
Scale: 3:40

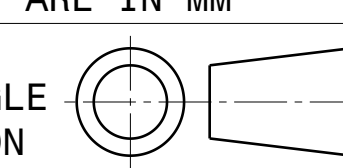


Front view  
Scale: 3:40



Right view  
Scale: 3:40

UNLESS OTHERWISE SPECIFIED DIMENSION ARE IN MM  
VIEWS: THIRD ANGLE PROJECTION



This drawing is our property. It can't be reproduced or communicated without our written agreement.  
www.p2p.ind.in

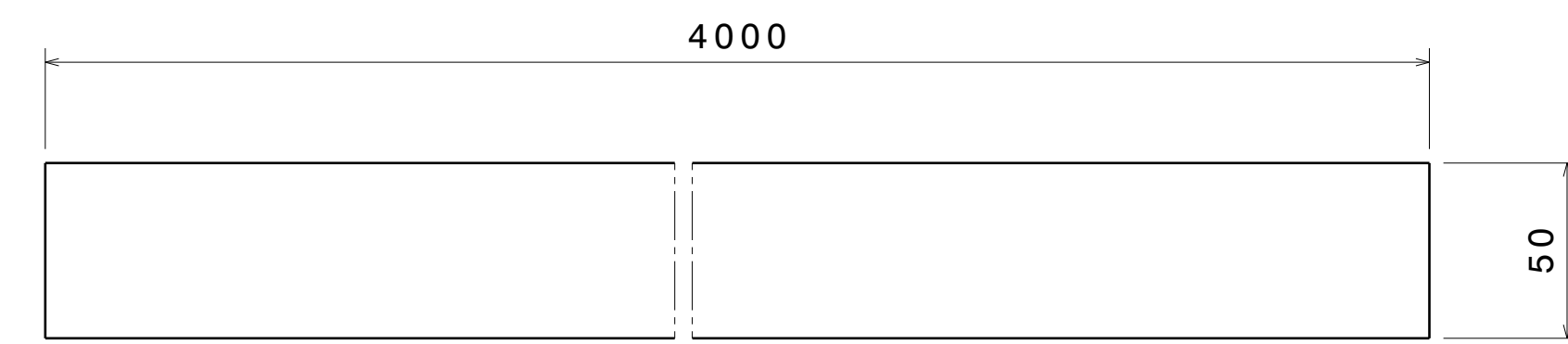
DRAWN BY	DATE
SB	17MAY2021
CHECKED BY	DATE
P2P Analysis & Solutions	17MAY2021
DESIGNED BY	DATE
P2P Analysis & Solutions	17MAY2021

APL APOLLO TUBES LTD.

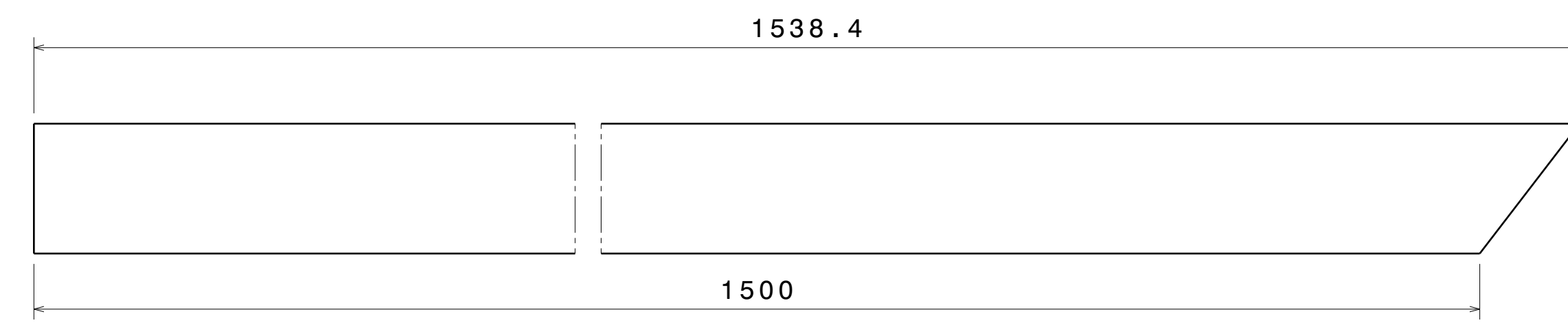
DRAWING TITLE		PARKING SHED	
SIZE	DRAWING NUMBER	REV	
A0	P2P MAY 21-13	00	
SCALE	NONE	WEIGHT (kg)	XXX
			SHEET 2 OF 3

REV	DATE	DESCRIPTION
00	17MAY2021	INITIAL REVISION

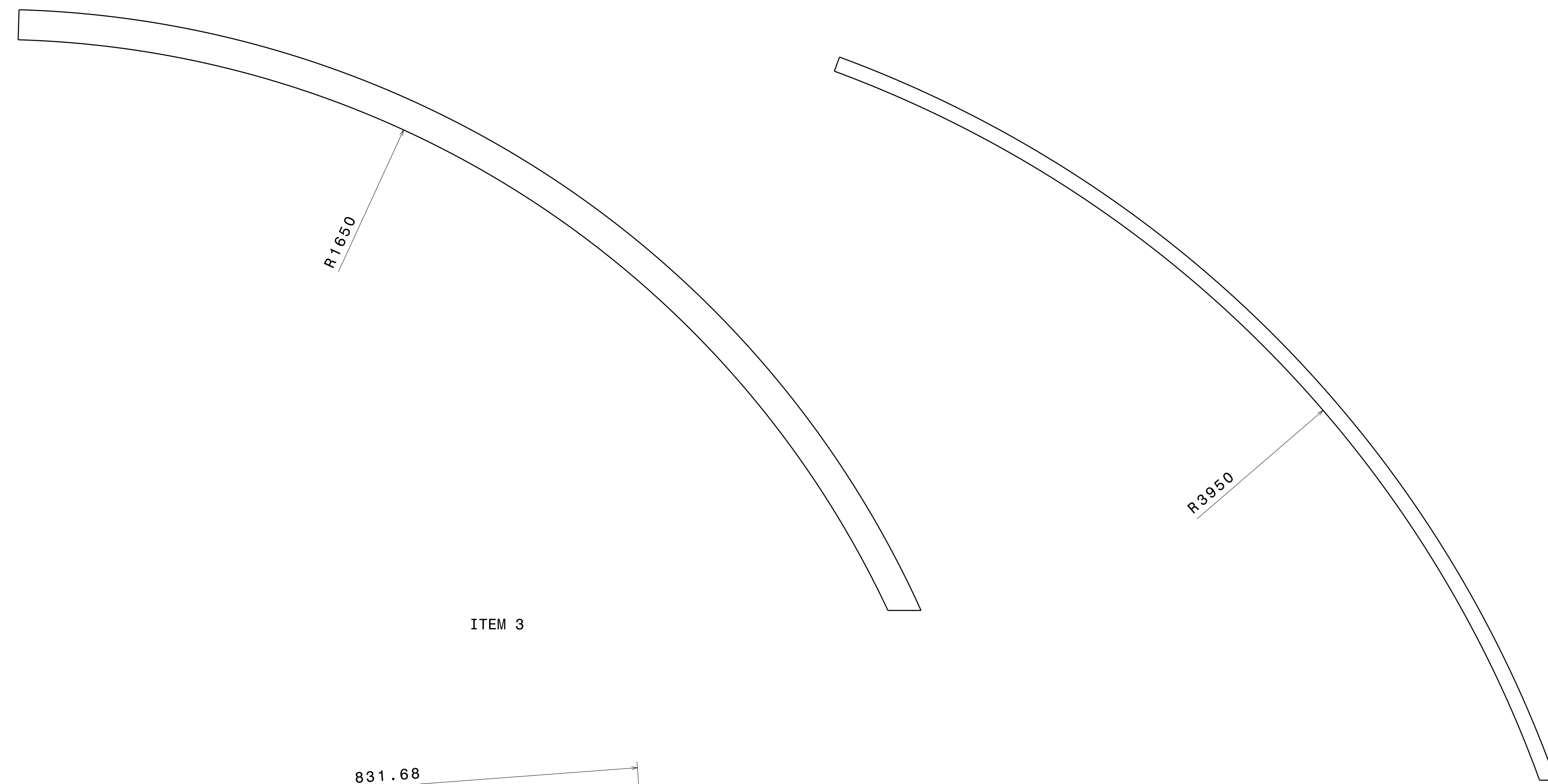
ITEM 1 TO ITEM 6, RHS  
CROSS SECTION 50 X 25 X 2.6



ITEM 1

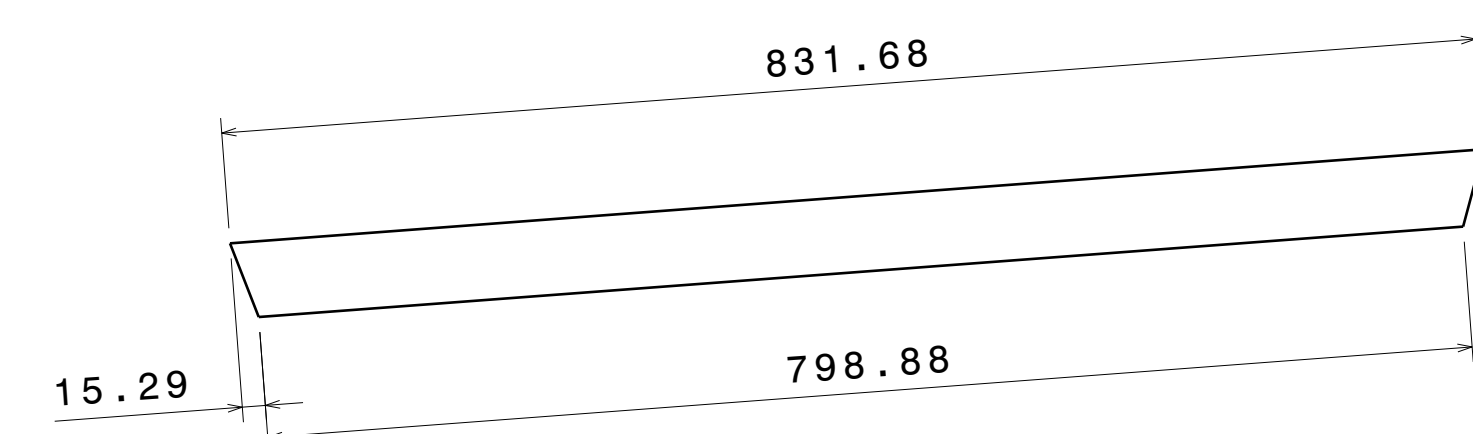


ITEM 2

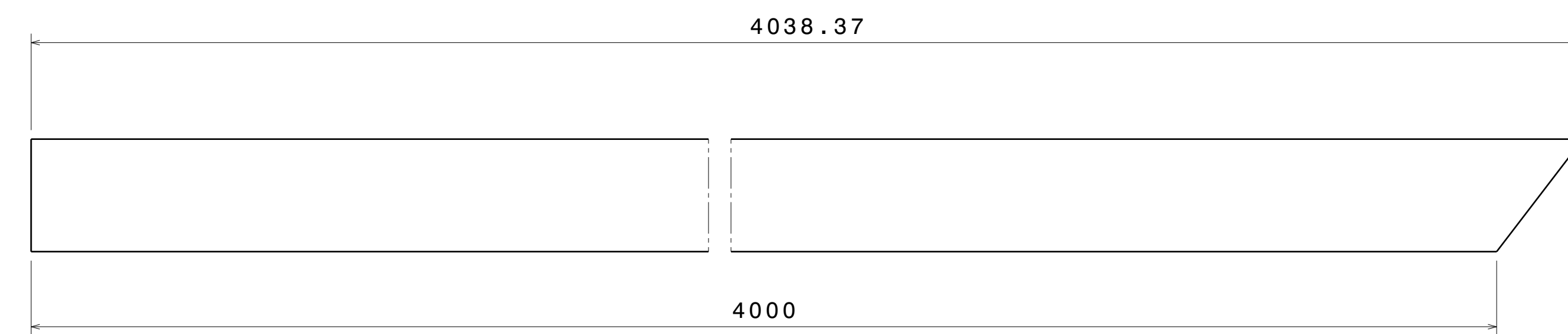


ITEM 3

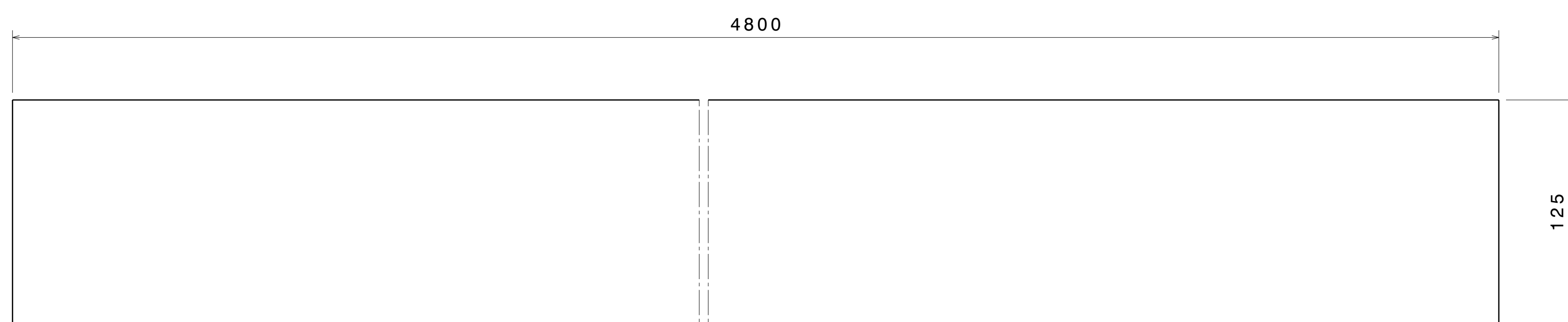
ITEM 4



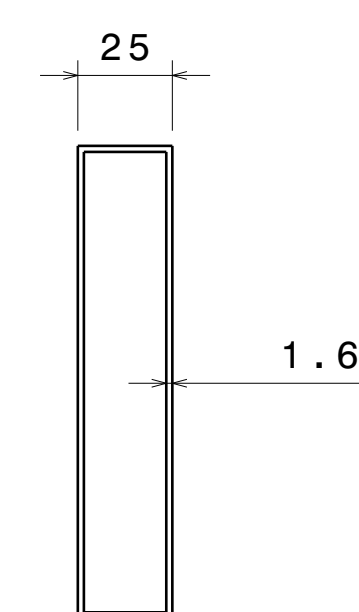
ITEM 5



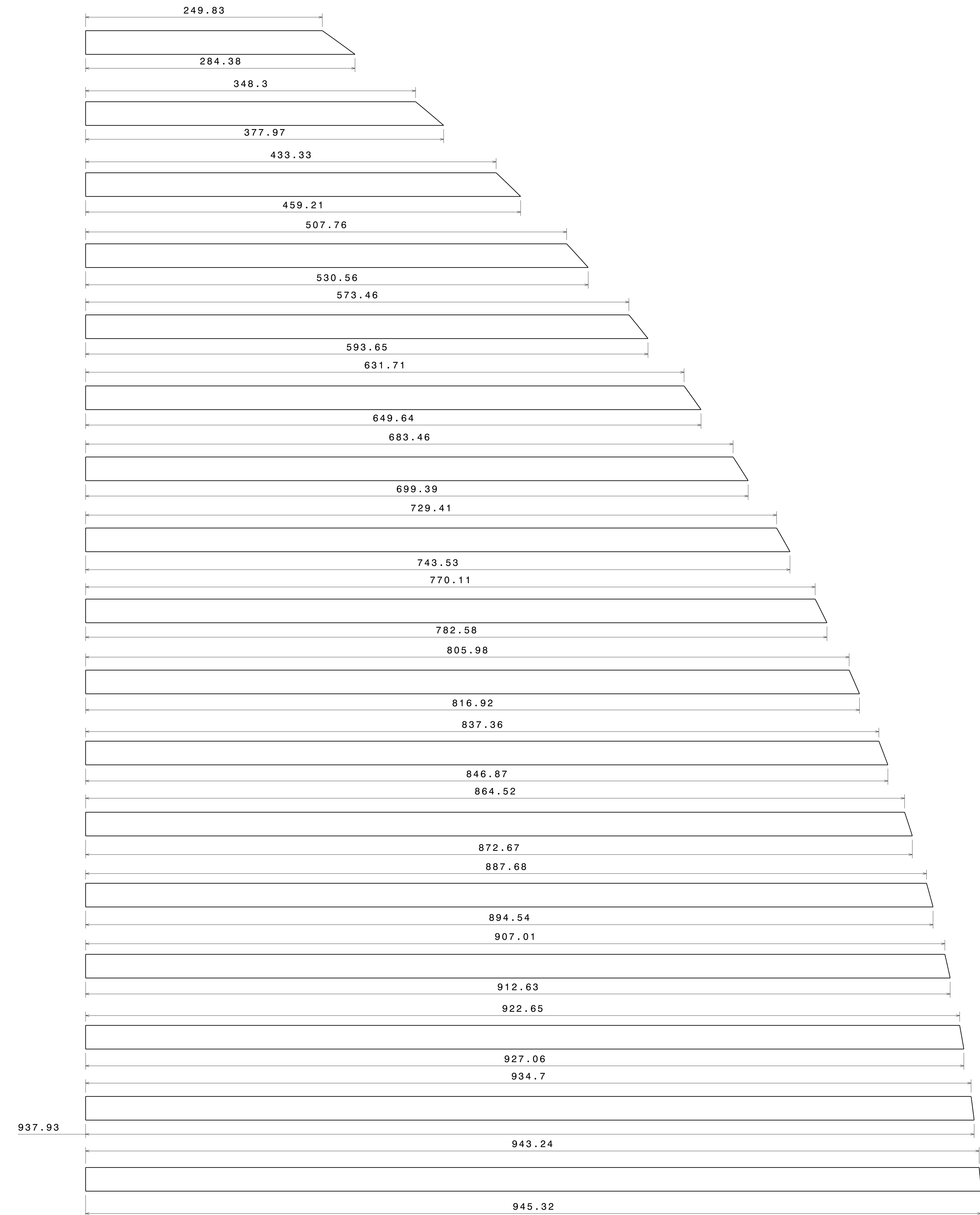
ITEM 6



ITEM 7

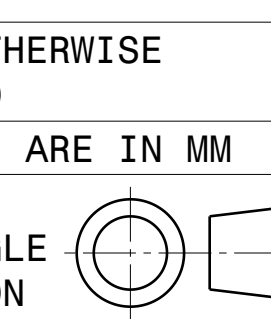


Right view  
Scale: 1:2



Front view  
ITEM 8 TO 24  
SHS CROSS SECTION: 25 X 25 X 1.6

UNLESS OTHERWISE SPECIFIED DIMENSION ARE IN MM  
VIEWS: THIRD ANGLE PROJECTION



This drawing is our property. It can't be reproduced or communicated without our written agreement.  
www.p2p.ind.in  
DRAWN BY: SB  
CHECKED BY: P2P Analysis & Solutions  
DESIGNED BY: P2P Analysis & Solutions

DATE: 17MAY2021  
DATE: 17MAY2021  
DATE: 17MAY2021

APL APOLLO TUBES LTD.	
DRAWING TITLE: PARKING SHED	
SIZE: A0	DRAWING NUMBER: P2P MAY 21-13
SCALE: NONE	WEIGHT (kg): XXX
REV: 00	SHEET 3 OF 3