



OUR NETWORK OF INNER STRENGTH

10 Plants	24 Branch Offices	800. Dealers & Distributors	2000 In Towns & Cities
1 Lakh+ Retailers & Fabricators	25.5 Lakh Tonnes Capacity	30+ Years of Experience	

CORPORATE OFFICE:

36, Kaushambi, Near Anand Vihar Terminal, Delhi NCR, India. Contact No.: +91-120-4041400

NOIDA OFFICE:

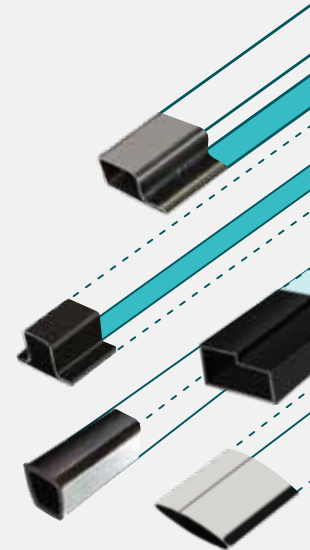
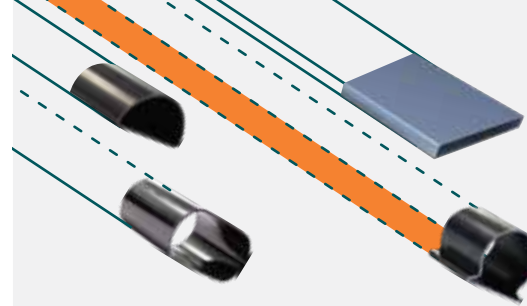
Tapasya Corporate Heights, 4th Floor, Tower A, Sector - 126, Noida, Uttar Pradesh - 201303

Stay connected. Stay updated.

/ APL APOLLO | / APL APOLLO OFFICIAL



Scan to know more about us



INNOVATIVE
PRODUCT
COLLECTION

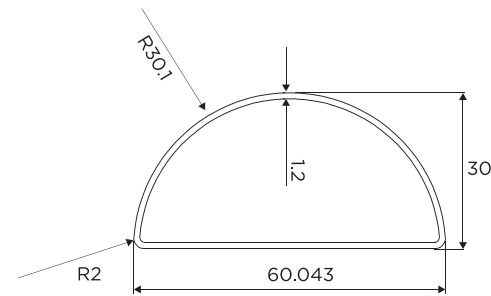


Sudesh Group

Sudesh Group is India's leading Steel Tubes and PVC Pipes manufacturer with 13 plants across different locations in the country. It's a pioneer in steel tubes of different types and shapes. For over 3 decades, SG Group has been revolutionizing the Steel Tubes manufacturing industry.



APL Apollo, a part of SG Group, is the country's largest manufacturer of steel pipes and tubes. Using High Frequency Induction Welding Technique (HFIW), APL Apollo has a capacity to produce 25.5 Lakh tonnes of pipes per annum. The company is the unrivalled pioneer of Direct Forming Technology (DFT) as well as many other innovative products in the country.

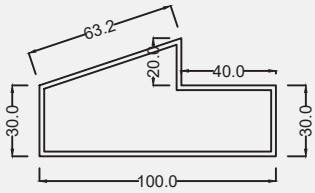


Size: 60X30 mm Thickness: 1-2 mm
27.6X12.4 mm

Applications/Advantages:

- Used in making railings for balconies, roofs etc.
- Lightweight enabling easy movement
- Crafted with precision ensuring uniformity

SINGLE DOOR FRAME

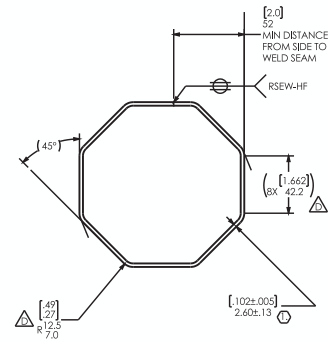


Size: 100X50mm

Thickness: 1.2-3 mm

Applications/Advantages:

- Used in making steel door frames
- Superior quality that ensures longer life
- Great durability, able to endure severe conditions
- Lower cost compared to wooden frames
- Innovatively designed to be free from termite



Size: 57 OD

Thickness: 1.2 to 2.5 mm

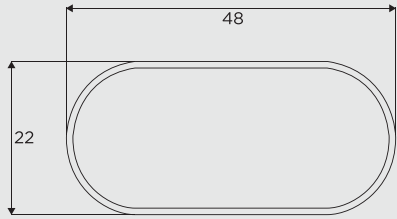
Applications

- Furniture
- Hand Railing
- Lighting Pole
- Solar Panel

OCTAGON TUBES



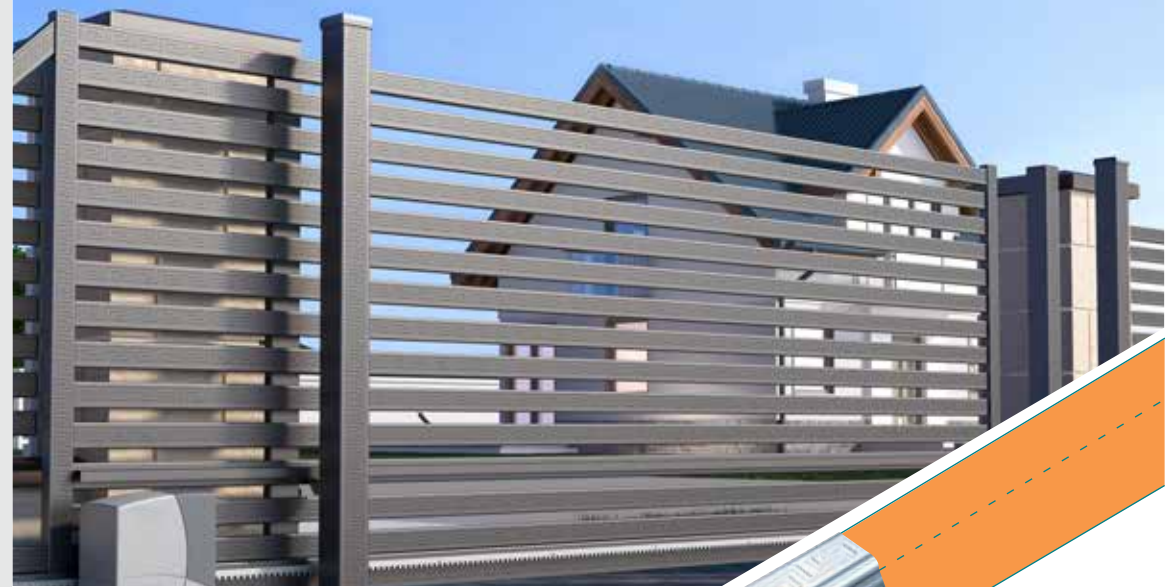
FLAT OVAL / CAPSULE SECTION



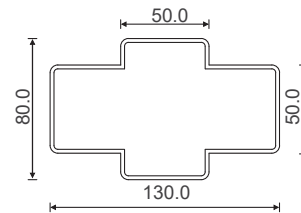
Size: 48X22 mm Thickness: 1.2-3 mm

Applications/Advantages:

- Used in making steel furniture, gym equipment and other fabrication work
- High strength to withstand pressure
- Great durability, able to endure severe conditions



SIGNATURE

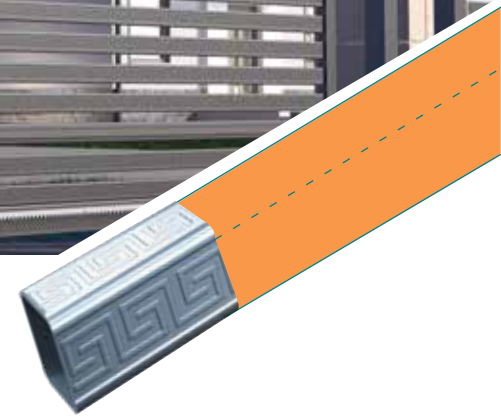


Size: 15X15mm
20X20mm
25X25mm to
72X72mm
80X80mm to
100X100mm

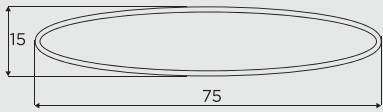
Thickness: 0.80-2.50 & above

Applications/advantages:

- YST 400 for super strength & durability
- 150 GSM zinc coating to prevent corrosion
- Superior design for superior strength
- Aesthetics that are pleasing to the eye
- Stunning design patterns on every pipe



ELLIPTICAL TUBE



Size: 75X15 mm Thickness: 1-2 mm

Applications/Advantages:

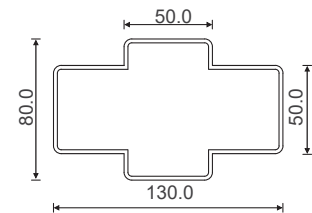
- Used in transformers and as a designer pipe in gates, railings and steel furnitures
- High strength to withstand pressure
- Great durability to endure severe conditions
- Superior quality that ensures longer life
- Economical with minimal maintenance cost

**Other sections and thickness can be developed as per requirement*



SMALL SECTION

Size: 12X12 mm
15X15 mm
20X20 mm Thickness: 1.0-2.5 mm

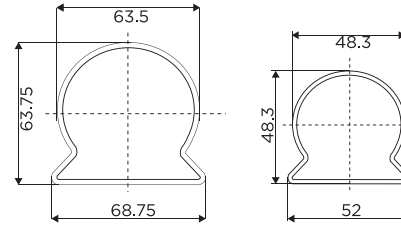


Applications/Advantages:

- Used in grills, gates and as a design element
- Contemporary design, replacing traditional bar
- High strength to withstand pressure
- Great durability to endure severe conditions
- Lower cost as compared to bars



HAND RAIL



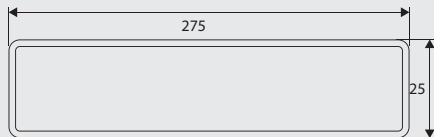
Applications/Advantages:

- Used as replacement for Wooden Hand Rail
- High strength that's able to withstand pressure
- Great durability, able to endure severe conditions
- Superior quality that ensures longer life
- Lightweight enabling easy movement
- Crafted with precision ensuring uniformity
- Minimal maintenance cost

Size: 2 inches
2.5 inches

Thickness: 1.4-2 mm

PLANK



Size: 125X25mm
150X25mm
175X25mm
200X25mm
225X25mm
250X25mm
275X25mm

Thickness: 1.6 & 2.0 mm

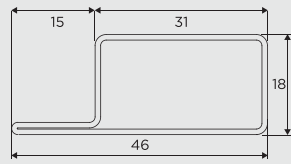
Applications/Advantages:

- Used in stairs, gates, fencing, furniture, truck closures & scaffolding
- Termite proof
- Fire-resistant
- Better aesthetics
- Cost-effective
- Durable
- Easily recyclable





WINDOW SECTIONS



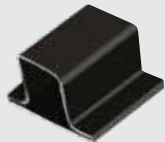
Size: 46X18 mm Thickness: 1-2 mm
 52X24 mm
 62X33 mm

WINDOW L SECTIONS

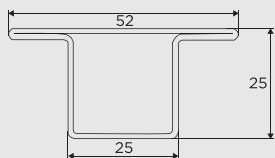
Applications/Advantages:

- Used in making steel window frames
- High strength that's able to withstand pressure
- Economical with minimal maintenance cost
- Precision design to ensuring a better finish
- Innovatively designed to be free from termite

WINDOW T SECTIONS



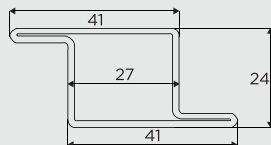
Size: 52X25 mm Thickness: 1-2 mm



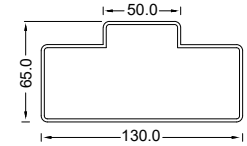
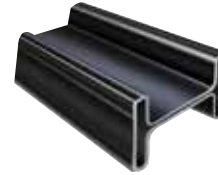
WINDOW Z SECTIONS



Size: 41X24 mm Thickness: 1-2 mm

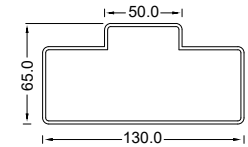


H SECTION



Features:

- High Strength
- Durability
- Used in Fencing solution



FLAT HEAD

Size: 65X43mm
 Thickness: 1.2 - 2.5mm

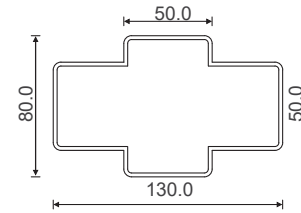
MUSHROOM HEAD

Size: 130X80 mm
 Thickness: 1.4-2.5 mm





FOUR DOOR FRAME

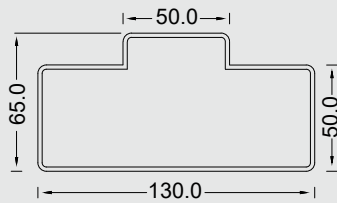


Applications/Advantages:

- Used in making steel door frames
- Superior quality that ensures longer life
- Great durability, able to endure severe conditions
- Lower cost compared to wooden frames
- Innovatively designed to be free from termite

Size: 130X80 mm

Thickness: 1.4-2.5 mm



Applications/Advantages:

- Used in making steel door frames
- Superior quality that ensures longer life
- Great durability, able to endure severe conditions
- Lower cost compared to wooden frames
- Innovatively designed to be free from termite

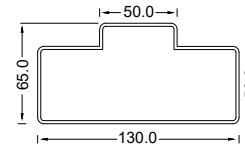
Size: 130X65 mm
100X70 mm
75X65 mm

DOUBLE DOOR FRAME





STREN-X (SQUARE GI)



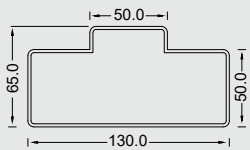
Size: 25X25-100X100mm
50X25-100X50mm

Thickness: 1.6 - 2.0mm

Features:

- High Strength
- Used for structural purpose
- Non corrosive

ELEGANT



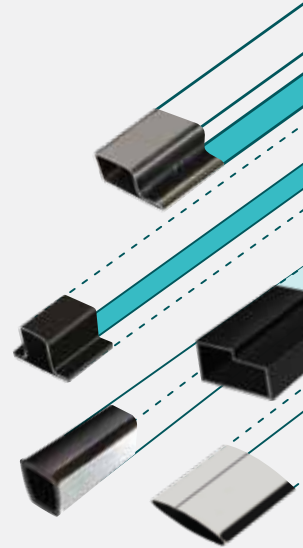
Size: 15X15mm
20X20mm
25X25mm - 72X72mm
80X80mm - 100X100mm

Thickness: 1.6-2 mm

Applications/Advantages:

- Used in Swings, Hand Rails, Grills & Furniture
- Durable
- Special engraved designs
- Eco friendly





INNOVATIVE
PRODUCT
COLLECTION