

1

2

3

4

5

6

A

A

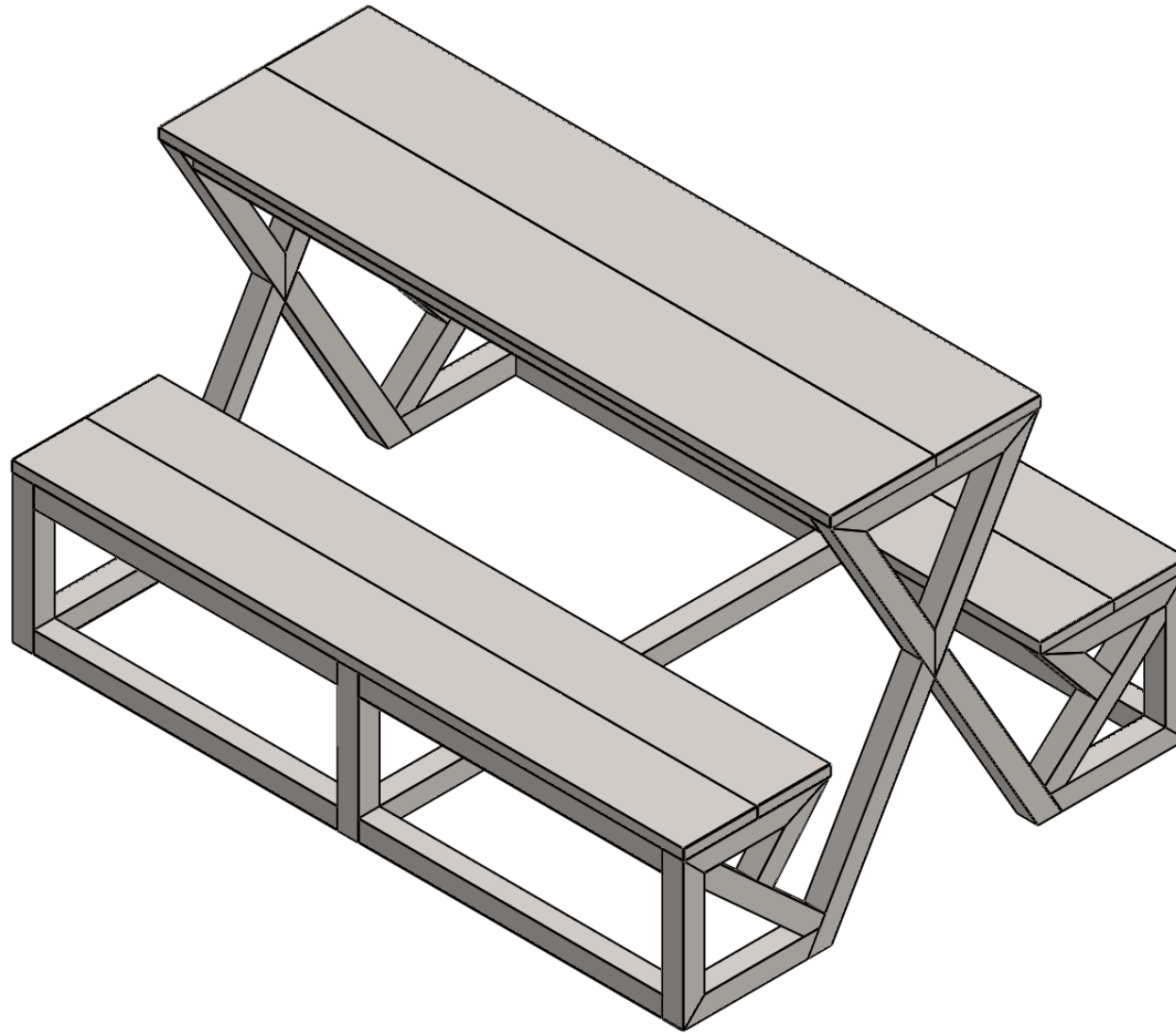
B

B

C

C

D



DO NOT SCALE DRAWING

REVISION

TITLE:

	NAME	SIGNATURE	DATE
DRAWN			
CHK'D			
APPVD			

DWG NO.

TABLE & BENCH

SCALE:1:20

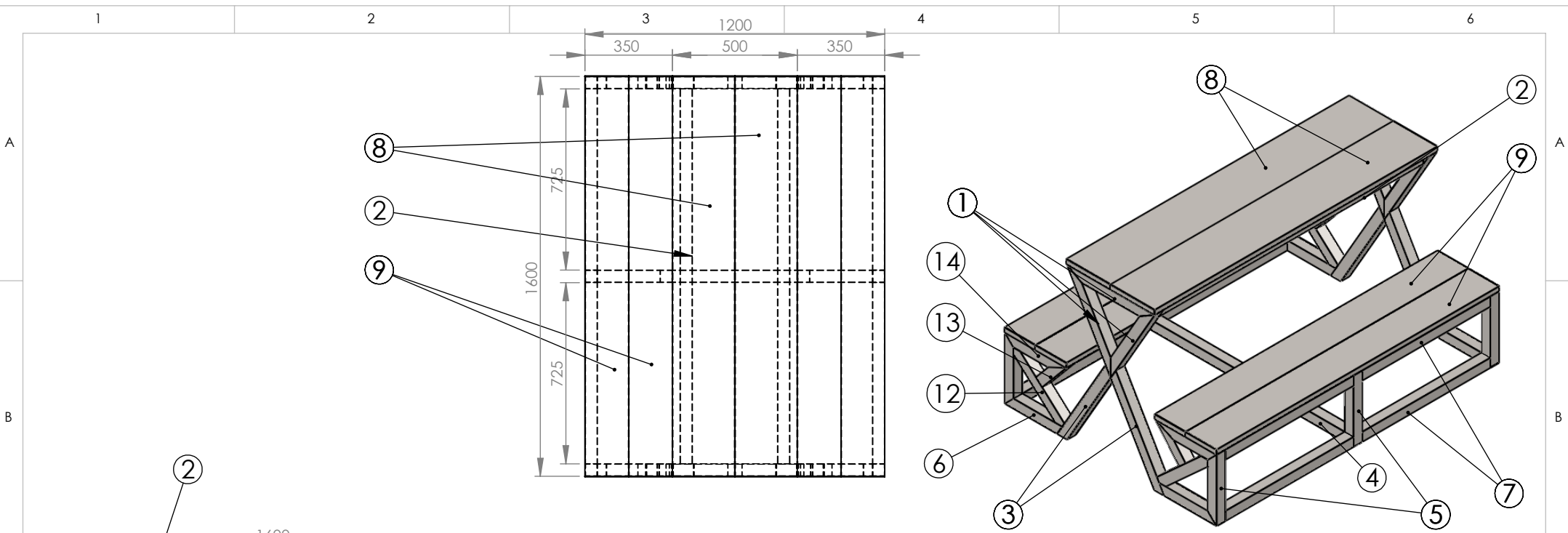
SHEET 1 OF 3

A4

1

2


3



ITEM NO.	PART NUMBER	DESCRIPTION	QTY.	Unit
1	50X50X2X500	SHS	6	3000
2	50X50X2X1500	SHS	2	3000
3	50X50X2X550	SHS	4	2200
4	50X50X2X1200	SHS	1	1200
5	50X50X2X350	SHS	8	2800
6	50X50X2X325	SHS	4	1300
7	50X50X2X725	SHS	8	5800
8	PLANK 250X25X2.0X1600	RHS	2	3200
9	PLANK 175X25X1.6X1600	RHS	4	6400
10	PLATE 250X25X2.0	PLATE	4	
11	PLATE 175X25X2.0	PLATE	8	
12	50X50X2X371.65	SHS	4	1486.6
13	50X50X2X213.55	SHS	4	854.2
14	50X50X2X350 (2)	SHS	4	1400

NOTE :-

- ALL VERTICAL AND HORIZONTAL SUPPORTS ARE PERFECTLY 90°.
- ∇7 SURFACE FINISH, MEDIUM TO SMOOTH IS USED.
- ALL TUBES ARE AS PER APL APOLLO STANDARD.
- FINE WELDING IS REQUIRED AS PER MENTION DETAILS AND FINISHING.
- JOINTS ARE WELD TOGETHER BY THE HIGH ACCURACY MIG WELDING.
- ALL DIMENSIONS ARE IN MM.
- HIGHER CURRENT WELDING MAY EFFECT THE BRITTLENESS OF MATERIAL WHICH MAY RAISE TO WEAKENING OF STRUCTURE.



DO NOT SCALE DRAWING

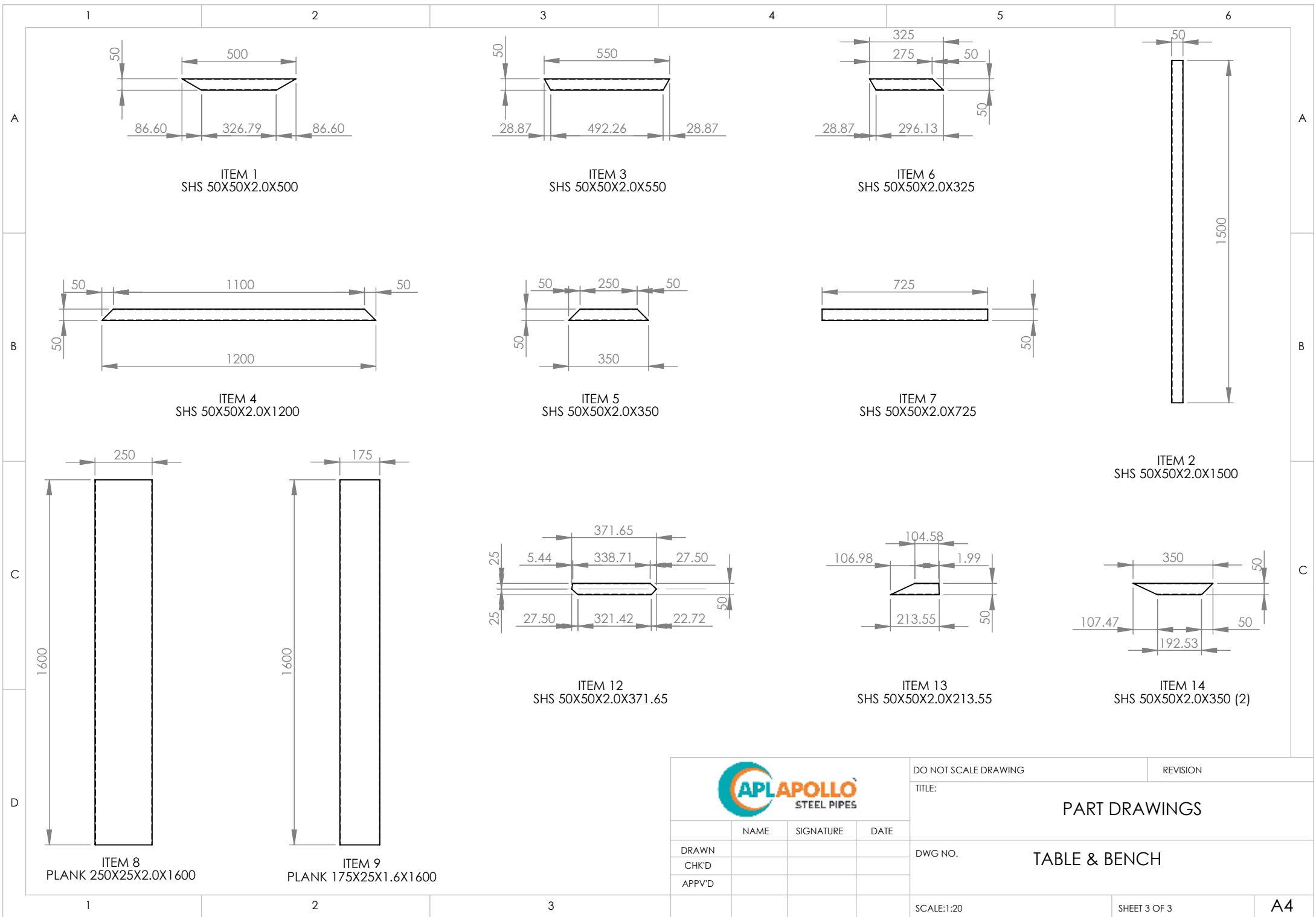
REVISION

NAME	SIGNATURE	DATE	
DRAWN			DWG NO. TABLE & BENCH
CHK'D			
APP'VD			

SCALE:1:20

SHEET 2 OF 3

A4



ITEM 1
SHS 50X50X2.0X500

ITEM 3
SHS 50X50X2.0X550

ITEM 6
SHS 50X50X2.0X325

ITEM 2
SHS 50X50X2.0X1500

ITEM 4
SHS 50X50X2.0X1200

ITEM 5
SHS 50X50X2.0X350

ITEM 7
SHS 50X50X2.0X725

ITEM 12
SHS 50X50X2.0X371.65

ITEM 13
SHS 50X50X2.0X213.55

ITEM 14
SHS 50X50X2.0X350 (2)

ITEM 8
PLANK 250X25X2.0X1600

ITEM 9
PLANK 175X25X1.6X1600

		DO NOT SCALE DRAWING		REVISION
		TITLE:		
NAME	SIGNATURE	DATE	DWG NO.	
DRAWN				TABLE & BENCH
CHK'D				
APPVD			SCALE:1:20	SHEET 3 OF 3