



OUR NETWORK OF INNER STRENGTH



10
Plants



24
Branch Offices



800+
Dealers & Distributors



In 2000
Towns & Cities



1 Lakh+
Retailers & Fabricators



25.5 Lakh
Tonnes Capacity



30+ Years
of Experience

CORPORATE OFFICE:

36, Kaushambi, Near Anand Vihar Terminal, Delhi NCR, India. Contact No.: +91-120-4041400

NOIDA OFFICE:

Tapasya Corporate Heights, 4th Floor, Tower A, Sector - 126, Noida, Uttar Pradesh - 201303

Toll - Free No. - 1800 102 3737

Stay connected. Stay updated.



/ APL APOLLO



/ APL APOLLO OFFICIAL



Scan to know more about us



SPECIAL PRODUCTS

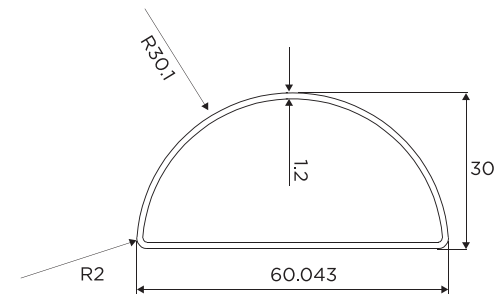


Sudesh Group

Sudesh Group is India's leading Steel Tubes and PVC Pipes manufacturer with 13 plants across different locations in the country. It's a pioneer in steel tubes of different types and shapes. For over 3 decades, SG Group has been revolutionizing the Steel Tubes manufacturing industry.



APL Apollo, a part of SG Group, is the country's largest manufacturer of steel pipes and tubes. Using High Frequency Induction Welding Technique (HFIW), APL Apollo has a capacity to produce 25.5 Lakh tonnes of pipes per annum. The company is the unrivalled pioneer of Direct Forming Technology (DFT) as well as many other innovative products in the country.



Size: 60X30 mm

Thickness 1 - 2 mm

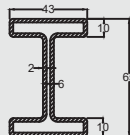
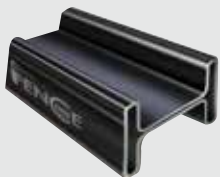
Weight : 1.17 - 2.29 kg/m

Applications/Advantages:

- Used in making railings for balconies, roofs etc.
- Lightweight enabling easy movement
- Crafted with precision ensuring uniformity

APLAPOLLO

FENCE

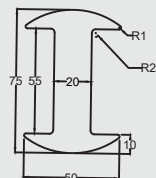


FLAT HEAD

Size: 65X43mm

Thickness: 1.4 - 2.5mm

Weight: 3.02 - 5.50 kg/m



MUSHROOM HEAD

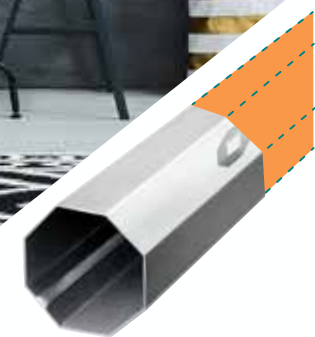
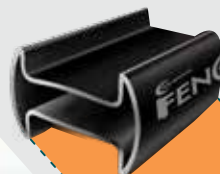
Size: 75X50 mm

Thickness: 1.4 - 2.5 mm

Weight: 3.02 - 5.50 kg/m

Applications/Advantages:

- High strength to withstand pressure
- Greater durability to endure severe conditions
- Used in Fencing post & Fencing solution

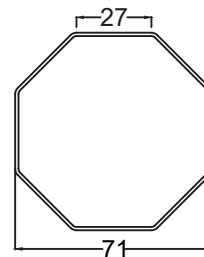


APLAPOLLO

OCTAGON

Applications/Advantages

- Widely used in furniture, railings, solar panels and lighting poles
- Easy fabrication and looks fancy
- Dimensional accuracy
- Unbeatable durability



Size:

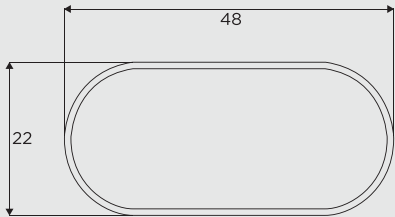
41.0mm
60.3mm
74.5mm
95.4mm
127.0mm

Thickness:

0.8 - 2mm
1.2 - 3mm
1.2 - 3mm
1.2 - 3mm
2.0 - 5mm

Weight(kg/m):

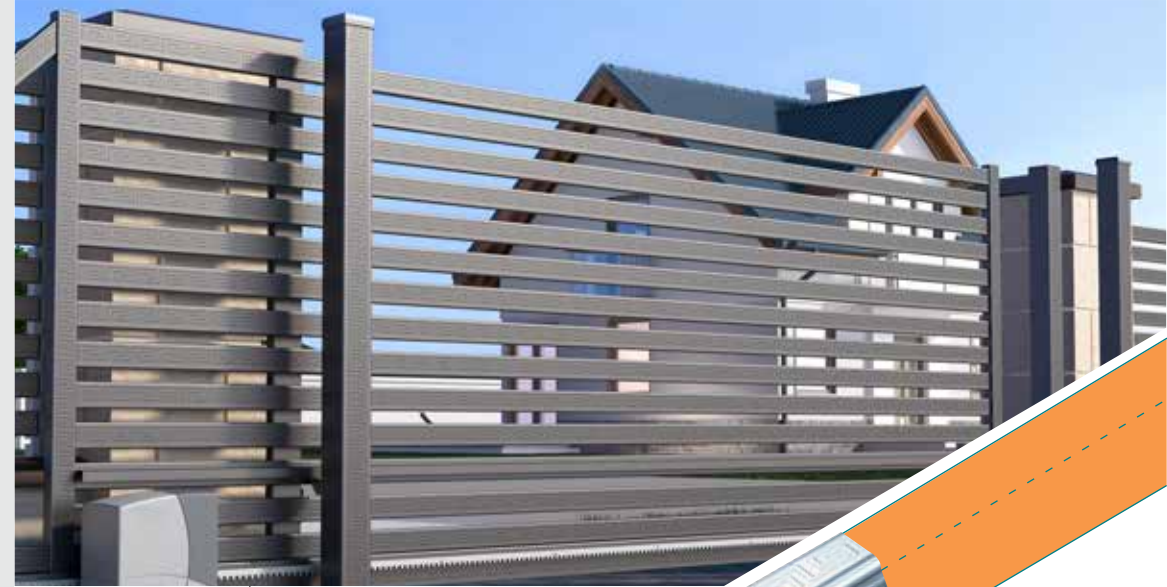
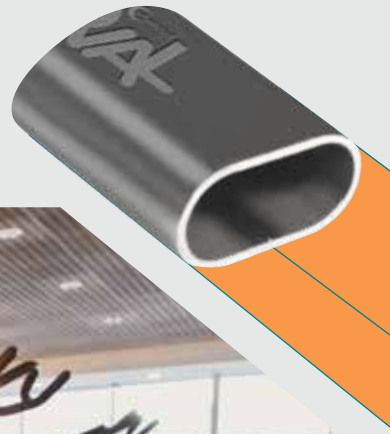
0.79 - 1.92
1.75 - 4.24
2.17 - 5.29
2.78 - 6.38
6.17-15.04



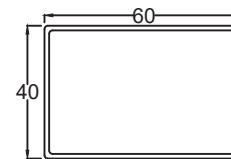
Size:	Thickness:	Weight(kg/m):
35X15mm	1.0 - 2mm	0.67 - 1.28
70X40mm	1.2 - 2mm	1.71 - 2.82
115X42mm	1.2 - 3mm	2.58 - 6.33
107X57mm	1.2 - 3mm	2.63 - 6.45

Applications/Advantages:

- Used in making steel furniture, gym equipment and other fabrication work
- High strength to withstand pressure
- Great durability, able to endure severe conditions



APOLLO
SIGNATURE
DESIGNER GALVANIZED PIPES



Size: 25X25mm to 100X100mm Thickness: 0.8-2.5

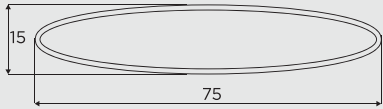
Applications/advantages:

- YST 400 for super strength & durability
- 150 GSM zinc coating to prevent corrosion
- Superior design for superior strength
- Aesthetics that are pleasing to the eye
- Stunning design patterns on every pipe

**Other sections and thickness can be developed as per requirement*



Elliptical



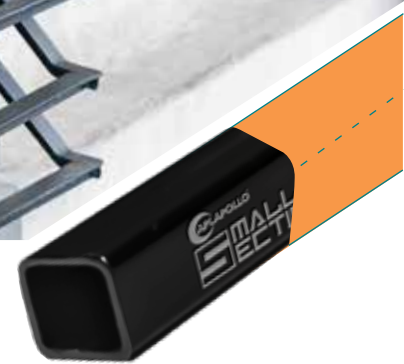
Size:
75X15 mm
115X57 mm

Thickness:
1.0 - 2.0 mm
2.5 - 5.1

Weight (kg/m)
1.4 - 2.9
2.5 - 5.1

Applications/Advantages:

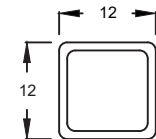
- Used in transformers and as a designer pipe in gates, railings and steel furnitures
- High strength to withstand pressure
- Great durability to endure severe conditions
- Superior quality that ensures longer life
- Economical with minimal maintenance cost



SMALL SECTION

Size: 12X12 mm
15X15 mm
20X20 mm

Thickness: 1.0 - 2.5 mm



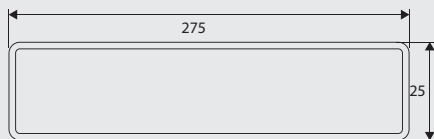
Applications/Advantages:

- Used in grills, gates and as a design element
- Contemporary design, replacing traditional bar
- High strength to withstand pressure
- Great durability to endure severe conditions
- Lower cost as compared to bars

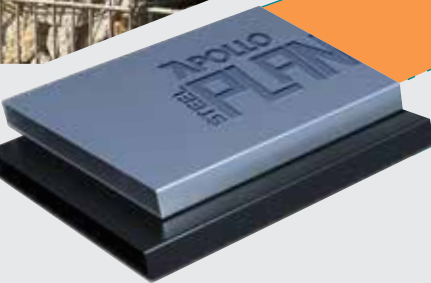




APOLLO
STEEL PLANK



Size:	Thickness	Weight (kg/m)
125X25mm	1.6 & 2.0 mm	3.71 & 4.61
150X25mm	1.6 & 2.0 mm	4.33 & 5.40
175X25mm	1.6 & 2.0 mm	4.96 & 6.18
200X25mm	1.6 & 2.0 mm	5.59 & 6.97
225X25mm	1.6 & 2.0 mm	6.22 & 7.75
250X25mm	1.6 & 2.0 mm	6.85 & 8.54
275X25mm	1.6 & 2.0 mm	7.48 & 9.33

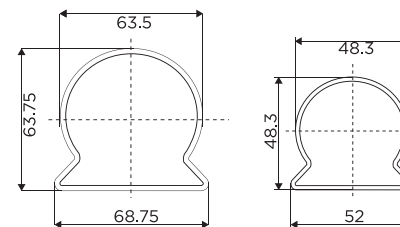


Applications/Advantages:

- Used in stairs, gates, fencing, furniture, truck closures & scaffolding
- Termite proof
- Fire-resistant
- Better aesthetics
- Cost-effective
- Durable
- Easily recyclable

*Embossed plank are also available

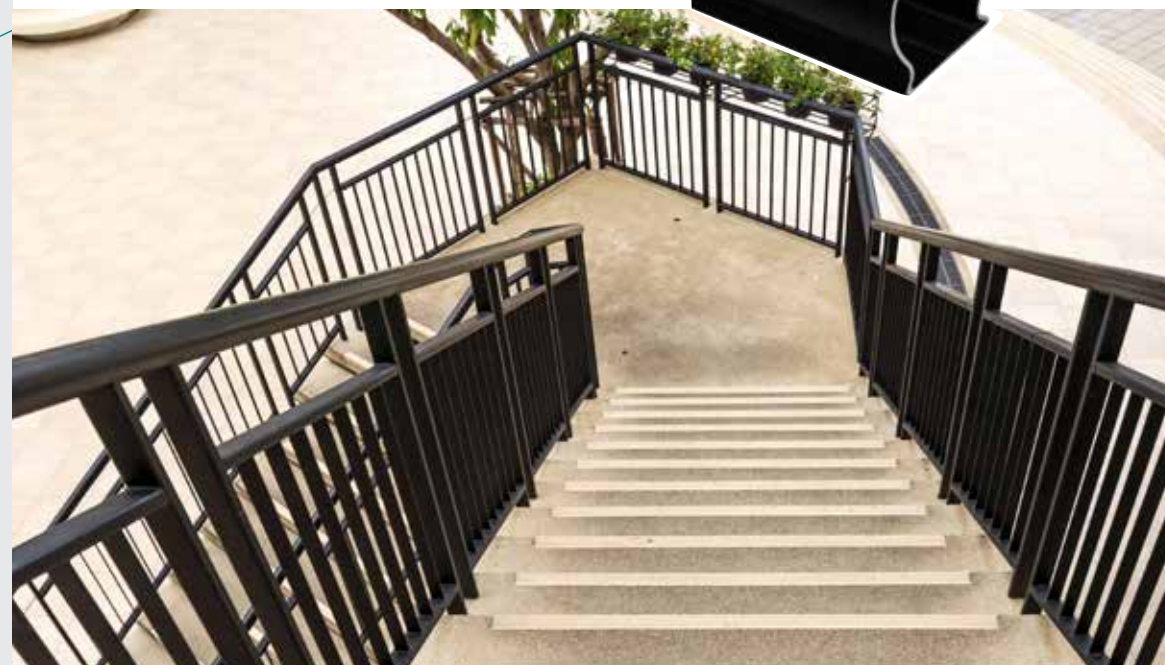
APOLLO
HANDRAIL



Size:	Thickness:	Weight (kg/m):
2.0 inches	1.4 & 2 mm	2.03 & 2.88
2.5 inches	1.4 & 2 mm	12.56 & 3.63

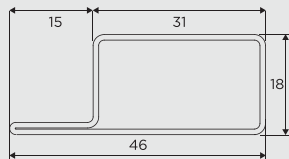
Applications/Advantages:

- Used as replacement for Wooden Hand Rail
- High strength that's able to withstand pressure
- Great durability to endure severe conditions
- Superior quality that ensures longer life
- Lightweight enabling easy movement
- Crafted with precision ensuring uniformity
- Minimal maintenance cost





**APOLLO
ALPHA**

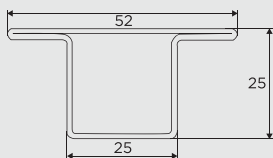


Size:	Thickness:	Weight (kg/m):
46X18 mm	1 - 2 mm	0.99 - 1.92
52X24 mm	1 - 2 mm	1.14 - 2.22
62X33 mm	1 - 2 mm	1.43 - 2.82

WINDOW T SECTIONS



Size: 52X25 mm
Thickness: 1-2 mm
Weight: 1.15 - 2.24 kg/m



WINDOW L SECTIONS

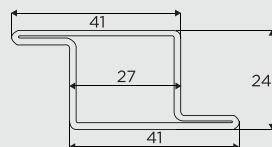
Applications/Advantages:

- Used in making steel window frames
- High strength that's able to withstand pressure
- Economical with minimal maintenance cost
- Precision design to ensuring a better finish
- Innovatively designed to be free from termite

WINDOW Z SECTIONS

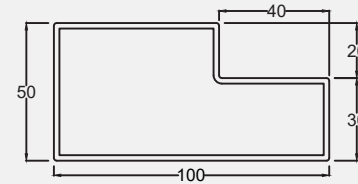


Size: 41X24 mm
Thickness: 1-2 mm
Weight: 1.17 - 2.29 kg/m



SINGLE DOOR FRAME

**APOLLO
CHAUKHAT**
STEEL DOOR & WINDOW FRAMES



Applications/Advantages:

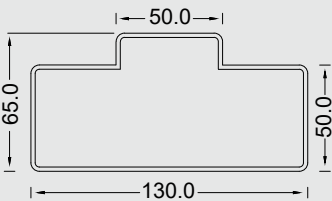
- Used in making steel door frames
- Superior quality that ensures longer life
- Great durability to endure severe conditions
- Lower cost compared to wooden frames
- Innovatively designed to be free from termite

Size: 100X50mm

Thickness: 1.2 - 2.5 mm

Weight: 2.60 - 5.33 kg/m





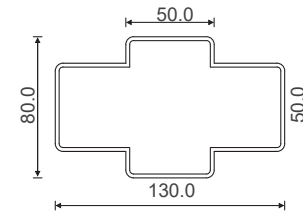
Applications/Advantages:

- Used in making steel door frames
- Superior quality that ensures longer life
- Great durability to endure severe conditions
- Lower cost compared to wooden frames
- Innovatively designed to be free from termite

Size: 130X65 mm Thickness: 1.4 - 2.5 mm Weight: 3.95 - 6.99 kg/m



FOUR DOOR FRAME



Applications/Advantages:

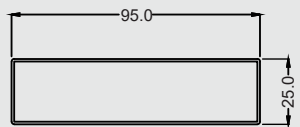
- Used in making steel door frames
- Superior quality that ensures longer life
- Great durability to endure severe conditions
- Lower cost compared to wooden frames
- Innovatively designed to be free from termite

Size: 130X80 mm Thickness: 1.4 - 2.5 mm Weight: 4.20 - 7.42 kg/m



DOUBLE DOOR FRAME

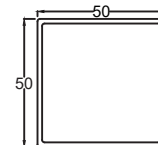




Size:	Thickness:	Weight (kg/m):
40X10 mm	1.0 - 2.5mm	0.73 - 1.64
50X15 mm	1.0 - 2.5mm	0.97 - 2.23
60X10 mm	1.0 - 2.5mm	1.05 - 2.42
95X25 mm	1.0 - 2.5mm	1.83 - 4.39

Applications/Advantages:

- Used in deck & balcony.
- High Strength and Load Bearing Capacity
- Longer Life
- Lightweight compared to Solid Steel Flats
- Uniform Length and Thickness
- Low Maintenance



Size: 25X25-100X100mm
50X25-100X50mm

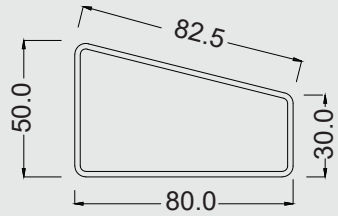
Thickness: 1.6 - 2.0mm

Features:

- High Strength
- Used for structural purpose
- Non corrosive

**Other sections and thickness can be developed as per requirement*





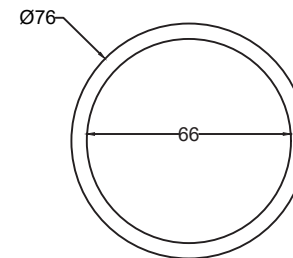
Applications/Advantages:

- High Strength
- Longer Life
- Low Maintenance Cost
- Used as stopper in parking area

Size:
80X50 mm

Thickness:
1.0 - 2.5 mm

Weight (kg/m)
1.86 - 4.51



Applications/Advantages:

- Low diameter high thickness tubes
- Used in heavy duty applications like Heavy Machinery & Industrial Equipment, Tower Crane Mast Sections, Gantry Cranes, Trailer Hitch, Rail & Agricultural Machinery.
- Sturdy built and attractive looks

Square

Size:	Thickness:	Weight:
30X30mm	2 - 8mm	1.7 - 4.6 kg/m
40X40mm	2 - 8mm	2.3 - 7.2 kg/m
50X50mm	3 - 8mm	4.3 - 9.9 kg/m
60X60mm	3 - 8mm	5.2 - 12.2 kg/m
72X72mm	4 - 8mm	6.4 - 15.2 kg/m

Round

Size:	Thickness:	Weight:
38.1OD	3 - 8 mm	2.6 - 5.9 kg/m
48.0OD	3 - 8 mm	3.3 - 7.9 kg/m
60.3OD	3 - 8 mm	4.2 - 10.3 kg/m
71.5OD	3 - 8 mm	5.1 - 12.5 kg/m
76.2OD	4 - 9 mm	7.1 - 14.9 kg/m
88.9OD	5 - 10 mm	10.3 - 19.4 kg/m

Rectangular

Size:	Thickness:	Weight:
50X30	2 - 8mm	2.3 - 7.2 kg/m
70X30	3 - 8mm	4.3 - 9.9 kg/m
60X40	3 - 8mm	4.3 - 9.9 kg/m
70X50	3 - 8mm	5.2 - 12.2 kg/m
100X50	3 - 8mm	6.6 - 15.9 kg/m